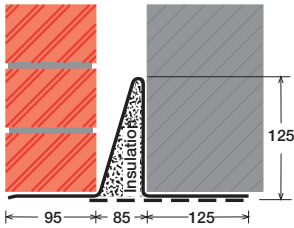


To suit walls with: Outer: 95mm - 115mm, Cavity: 85mm - 96mm, Inner: 125mm -

# Cavity Wall Lintels - 100/85/125

## LIGHT/STANDARD DUTY SC90Ea



### Lintel Section Properties

Ixx	299.19 cm <sup>4</sup>
Zxx	32.17 cm <sup>3</sup>
Weight	13.52 kg/m
Area	17.20 cm <sup>2</sup>
Ryy	6.87 cm

Typical Optional Features	
Option	Spec. Suffix
Lintray (see p6)	Prefix /L
Feature Brick (see p9)	Suffix /FB
Outer step 20mm	Suffix /ST
Flat Base (no plaster key)	Suffix /F
Cant Outer (50mm)	Suffix /C
Wide Outer (125mm)	Suffix /WO

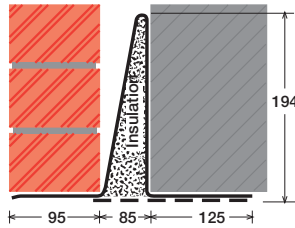
Permissible Load Ratio 1:1 - 1:5

### Lintel Load Capacity Table

Opening Span	Lintel Length	Safe Load kN
600	900	30
750	1050	30
900	1200	30
1050	1350	30
1200	1500	28
1350	1650	26
1500	1800	23
1650	1950	21
1800	2100	20
1950	2250	18
2100	2400	17
2250	2550	16
2400	2700	15
2550	2850	14

Where no load is shown  
a heavier duty lintel is needed

## STANDARD DUTY SC90Eb



### Lintel Section Properties

Ixx	921.30 cm <sup>4</sup>
Zxx	68.78 cm <sup>3</sup>
Weight	17.10 kg/m
Area	21.77 cm <sup>2</sup>
Ryy	6.21 cm

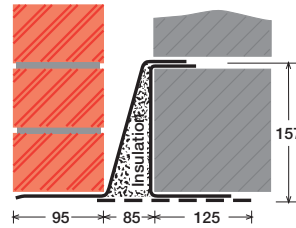
Typical Optional Features	
Option	Spec. Suffix
Lintray (see p6)	Prefix /L
Feature Brick (see p9)	Suffix /FB
Outer step of 20mm	Suffix /ST
Flat Base (no plaster key)	Suffix /F
Cant Outer (50mm)	Suffix /C
Wide Outer (125mm)	Suffix /WO

Permissible Load Ratio 1:1 - 1:5

### Lintel Load Capacity Table

Opening Span	Lintel Length	Safe Load kN
600	900	50
750	1050	50
900	1200	50
1050	1350	50
1200	1500	50
1350	1650	50
1500	1800	50
1650	1950	46
1800	2100	43
1950	2250	40
2100	2400	37
2250	2550	35
2400	2700	33
2550	2850	31
2700	3000	30
2850	3150	28
3000	3300	27
3150	3450	26
3300	3600	24
3450	3750	23
3600	3900	23
3750	4050	22
3900	4200	21
4050	4350	20
4200	4500	19
4350	4650	19
4500	4800	18

## MEDIUM DUTY MC90Ea



### Lintel Section Properties

Ixx	785.95 cm <sup>4</sup>
Zxx	78.30 cm <sup>3</sup>
Weight	16.97 kg/m
Area	21.60 cm <sup>2</sup>
Ryy	6.27 cm

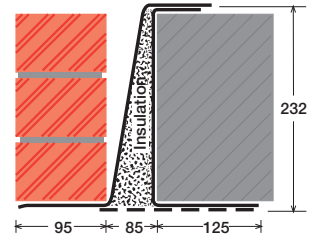
Typical Optional Features	
Option	Spec. Suffix
Lintray (see p6)	Prefix /L
Feature Brick (see p9)	Suffix /FB
Outer step of 20mm	Suffix /ST
Flat Base (no plaster key)	Suffix /F
Cant Outer (50mm)	Suffix /C
Wide Outer (125mm)	Suffix /WO

Permissible Load Ratio 1:1 - 1:19

### Lintel Load Capacity Table

Opening Span	Lintel Length	Safe Load kN
600	900	40
750	1050	40
900	1200	40
1050	1350	40
1200	1500	40
1350	1650	40
1500	1800	40
1650	1950	40
1800	2100	40
1950	2250	40
2100	2400	40
2250	2550	40
2400	2700	38
2550	2850	36
2700	3000	34
2850	3150	32
3000	3300	31
3150	3450	29
3300	3600	28
3450	3750	26
3600	3900	24
3750	4050	22
3900	4200	20
4050	4350	19
4200	4500	18
4350	4650	16
4500	4800	15

## MEDIUM/HEAVY DUTY MC90Eb



### Lintel Section Properties

Ixx	2073.51 cm <sup>4</sup>
Zxx	148.11 cm <sup>3</sup>
Weight	21.35 kg/m
Area	27.18 cm <sup>2</sup>
Ryy	5.76 cm

Typical Optional Features	
Option	Spec. Suffix
Lintray (see p6)	Prefix /L
Feature Brick (see p9)	Suffix /FB
Outer step of 20mm	Suffix /ST
Flat Base (no plaster key)	Suffix /F
Cant Outer (50mm)	Suffix /C
Wide Outer (125mm)	Suffix /WO

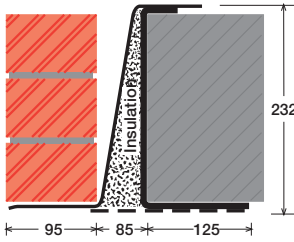
Permissible Load Ratio 1:1 - 1:19

### Lintel Load Capacity Table

Opening Span	Lintel Length	Safe Load kN
600	900	60
750	1050	60
900	1200	60
1050	1350	60
1200	1500	60
1350	1650	60
1500	1800	60
1650	1950	60
1800	2100	60
1950	2250	60
2100	2400	60
2250	2550	60
2400	2700	60
2550	2850	58
2700	3000	55
2850	3150	52
3000	3300	50
3150	3450	47
3300	3600	45
3450	3750	43
3600	3900	42
3750	4050	40
3900	4200	39
4050	4350	37
4200	4500	36
4350	4650	35
4500	4800	34

Within this basic wall construction there is considerable scope to tailor the section shape to your exact requirement using our many options and usually the lead time remains the same! These examples show possible option specifications:

HEAVY DUTY  
**HC90E**



Lintel Section Properties

Ixx	3143.72 cm <sup>4</sup>
Zxx	199.35 cm <sup>3</sup>
Weight	35.40 kg/m
Area	45.06 cm <sup>2</sup>
Ryy	6.44 cm

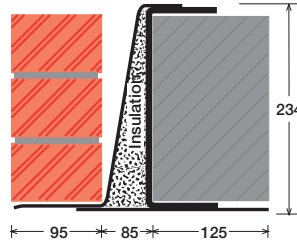
Option	Spec. Suffix
Lintray (see p6)	Prefix /L
Feature Brick (see p9)	Suffix /FB
Outer step of 20mm	Suffix /ST
Flat Base (no plaster key)	Suffix /F
Cant Outer (50mm)	Suffix /C
Wide Outer (125mm)	Suffix /WO

Permissible Load Ratio 1:1 - 1:19

Lintel Load Capacity Table

Opening Span	Lintel Length	Safe Load kN
600	900	80
750	1050	80
900	1200	80
1050	1350	80
1200	1500	80
1350	1650	80
1500	1800	80
1650	1950	80
1800	2100	80
1950	2250	80
2100	2400	80
2250	2550	80
2400	2700	80
2550	2850	80
2700	3000	80
2850	3150	80
3000	3300	80
3150	3450	80
3300	3600	80
3450	3750	78
3600	3900	75
3750	4050	72
3900	4200	69
4050	4350	67
4200	4500	65
4350	4650	63
4500	4800	60

HEAVY DUTY/LONG SPANS  
**EAL6 90E**



Lintel Section Properties

Ixx	5371.44 cm <sup>4</sup>
Zxx	399.72 cm <sup>3</sup>
Weight	49.06 kg/m
Area	62.45 cm <sup>2</sup>
Ryy	5.70 cm

Option	Spec. Suffix
Lintray (see p6)	Prefix /L
Feature Brick (see p9)	Suffix /FB
Outer step of 20mm	Suffix /ST
Flat Base (no plaster key)	Suffix /F
Cant Outer (50mm)	Suffix /C
Wide Outer (125mm)	Suffix /WO

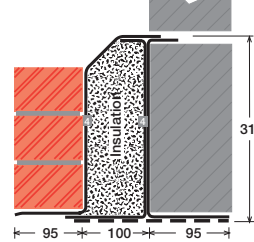
Permissible Load Ratio 1:1 - 1:19

Lintel Load Capacity Table

Opening Span	Lintel Length	Safe Load kN
600	900	184
900	1200	184
1200	1500	184
1500	1800	184
1800	2100	184
2100	2400	184
2400	2700	184
2700	3000	184
3000	3300	184
3300	3600	168
3600	3900	155
3900	4200	143
4200	4500	127
4500	4800	111
4800	5100	98
5100	5400	87
5400	5700	78
5700	6000	70
6000	6300	63
6300	6600	58
6600	6900	53
6900	7200	48
7200	7500	44
7500	7800	41
7800	8100	38
8100	8400	35

For material spec. see page 72

SUPER HEAVY DUTY/ LONG SPANS  
**HD4 200**



Lintel Section Properties

Ixx	7381.67 cm <sup>4</sup>
Zxx	437.08 cm <sup>3</sup>
Weight	44.67 kg/m
Area	56.86 cm <sup>2</sup>
Ryy	5.38 cm

Option	Spec. Suffix
Lintray (see p6)	Prefix /L
Feature Brick (see p9)	Suffix /FB
Outer step of 20mm	Suffix /ST
Flat Base (no plaster key)	Suffix /F
Cant Outer (50mm)	Suffix /C
Wide Outer (125mm)	Suffix /WO

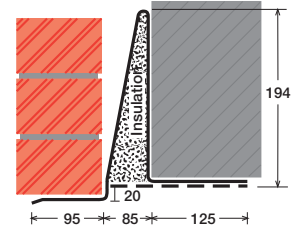
Permissible Load Ratio 1:1 - 1:19

Lintel Load Capacity Table

Opening Span	Lintel Length	Safe Load kN
600	900	199
900	1200	199
1200	1500	199
1500	1800	199
1800	2100	199
2100	2400	199
2400	2700	199
2700	3000	199
3000	3300	199
3300	3600	182
3600	3900	167
3900	4200	155
4200	4500	144
4500	4800	135
4800	5100	127
5100	5400 *	119
5400	5700 *	107
5700	6000 *	96
6000	6300 *	87
6300	6600 *	79
6600	6900 *	72
6900	7200 *	66
7200	7500 *	61
7500	7800 *	56
7800	8100 *	52
8100	8400 *	48

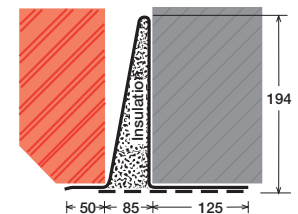
\*Stainless Steel only

**SC90Eb/ST**



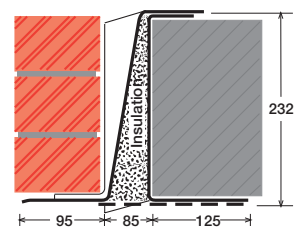
Lintel shown with optional step (ST)

**SC90Eb/C**



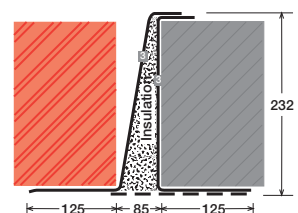
Lintel shown with optional cant outer (C)

**L/MC90Eb**



Lintel shown with optional lintray (L)

**MC90Eb/WO**



Lintel shown with optional wide outer (WO)