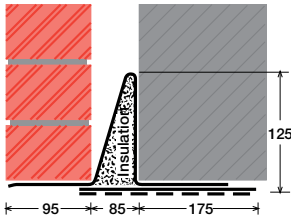


To suit walls with: Outer: 95mm - 115mm, Cavity: 85mm - 96mm, Inner: 175mm -

Cavity Wall Lintels - 100/85/175

LIGHT/STANDARD DUTY SC90EEa



Lintel Section Properties

lxx	371.24 cm ⁴
Zxx	36.61 cm ³
Weight	20.00 kg/m
Area	25.45 cm ²
Ryy	7.55 cm

Typical Optional Features	
Option	Spec. Suffix
Lintray (see p6)	Prefix /L
Feature Brick (see p9)	Suffix /FB
Outer step 20mm	Suffix /ST
Flat Base (no plaster key)	Suffix /F
Cant Outer (50mm)	Suffix /C
Wide Outer (125mm)	Suffix /WO

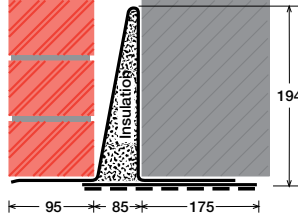
Permissible Load Ratio 1:1 - 1:5

Lintel Load Capacity Table

Opening Span	Lintel Length	Safe Load kN
600	900	30
750	1050	30
900	1200	30
1050	1350	30
1200	1500	30
1350	1650	30
1500	1800	27
1650	1950	25
1800	2100	23
1950	2250	21
2100	2400	20
2250	2550	18
2400	2700	17
2550	2850	16

Where no load is shown a heavier duty lintel is needed

STANDARD DUTY SC90EEb



Lintel Section Properties

lxx	1188.66 cm ⁴
Zxx	79.45 cm ³
Weight	23.12 kg/m
Area	29.43 cm ²
Ryy	6.58 cm

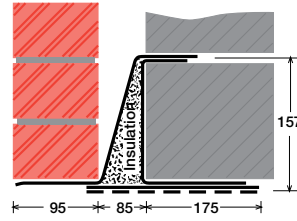
Typical Optional Features	
Option	Spec. Suffix
Lintray (see p6)	Prefix /L
Feature Brick (see p9)	Suffix /FB
Outer step of 20mm	Suffix /ST
Flat Base (no plaster key)	Suffix /F
Cant Outer (50mm)	Suffix /C
Wide Outer (125mm)	Suffix /WO

Permissible Load Ratio 1:1 - 1:5

Lintel Load Capacity Table

Opening Span	Lintel Length	Safe Load kN
600	900	50
750	1050	50
900	1200	50
1050	1350	50
1200	1500	50
1350	1650	50
1500	1800	50
1650	1950	50
1800	2100	49
1950	2250	46
2100	2400	43
2250	2550	40
2400	2700	38
2550	2850	36
2700	3000	34
2850	3150	32
3000	3300	31
3150	3450	29
3300	3600	28
3450	3750	27
3600	3900	26
3750	4050	25
3900	4200	24
4050	4350	22
4200	4500	22
4350	4650	21
4500	4800	20

MEDIUM DUTY MC90EEa



Lintel Section Properties

lxx	1075.05 cm ⁴
Zxx	97.90 cm ³
Weight	23.30 kg/m
Area	29.65 cm ²
Ryy	6.80 cm

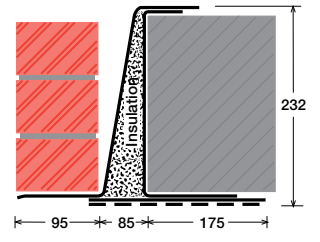
Typical Optional Features	
Option	Spec. Suffix
Lintray (see p6)	Prefix /L
Feature Brick (see p9)	Suffix /FB
Outer step of 20mm	Suffix /ST
Flat Base (no plaster key)	Suffix /F
Cant Outer (50mm)	Suffix /C
Wide Outer (125mm)	Suffix /WO

Permissible Load Ratio 1:1 - 1:19

Lintel Load Capacity Table

Opening Span	Lintel Length	Safe Load kN
600	900	40
750	1050	40
900	1200	40
1050	1350	40
1200	1500	40
1350	1650	40
1500	1800	40
1650	1950	40
1800	2100	40
1950	2250	40
2100	2400	40
2250	2550	40
2400	2700	40
2550	2850	40
2700	3000	40
2850	3150	40
3000	3300	38
3150	3450	37
3300	3600	35
3450	3750	34
3600	3900	32
3750	4050	30
3900	4200	28
4050	4350	26
4200	4500	24
4350	4650	23
4500	4800	21

MEDIUM/HEAVY DUTY MC90EEb



Lintel Section Properties

lxx	2490.63 cm ⁴
Zxx	156.50 cm ³
Weight	26.74 kg/m
Area	34.03 cm ²
Ryy	6.37 cm

Typical Optional Features	
Option	Spec. Suffix
Lintray (see p6)	Prefix /L
Feature Brick (see p9)	Suffix /FB
Outer step of 20mm	Suffix /ST
Flat Base (no plaster key)	Suffix /F
Cant Outer (50mm)	Suffix /C
Wide Outer (125mm)	Suffix /WO

Permissible Load Ratio 1:1 - 1:19

Lintel Load Capacity Table

Opening Span	Lintel Length	Safe Load kN
600	900	60
750	1050	60
900	1200	60
1050	1350	60
1200	1500	60
1350	1650	60
1500	1800	60
1650	1950	60
1800	2100	60
1950	2250	60
2100	2400	60
2250	2550	60
2400	2700	60
2550	2850	60
2700	3000	60
2850	3150	60
3000	3300	60
3150	3450	60
3300	3600	56
3450	3750	54
3600	3900	52
3750	4050	50
3900	4200	48
4050	4350	46
4200	4500	45
4350	4650	43
4500	4800	42

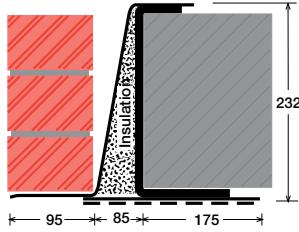
200mm (Cavity+inner must be < 285mm). Specials also available

EXAMPLES:

We can make even wider inners! Suffix/WI

Within this basic wall construction there is considerable scope to tailor the section shape to your exact requirement using our many options and usually the lead time remains the same! These examples show possible option specifications:

HEAVY DUTY
HC90EE



Lintel Section Properties

lxx	3791.63 cm ⁴
Zxx	253.16 cm ³
Weight	38.02 kg/m
Area	48.39 cm ²
Ryy	6.66 cm

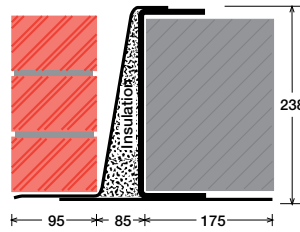
Option	Spec. Suffix
Lintray (see p6)	Prefix /L
Feature Brick (see p9)	Suffix /FB
Outer step of 20mm	Suffix /ST
Flat Base (no plaster key)	Suffix /F
Cant Outer (50mm)	Suffix /C
Wide Outer (125mm)	Suffix /WO

Permissible Load Ratio 1:1 - 1:19

Lintel Load Capacity Table

Opening Span	Lintel Length	Safe Load kN
600	900	80
750	1050	80
900	1200	80
1050	1350	80
1200	1500	80
1350	1650	80
1500	1800	80
1650	1950	80
1800	2100	80
1950	2250	80
2100	2400	80
2250	2550	80
2400	2700	80
2550	2850	80
2700	3000	80
2850	3150	80
3000	3300	80
3150	3450	80
3300	3600	80
3450	3750	76
3600	3900	73
3750	4050	71
3900	4200	68
4050	4350	66
4200	4500	63
4350	4650	61
4500	4800	59

HEAVY DUTY/LONG SPANS
EAL6 90EE



Lintel Section Properties

lxx	5904.91 cm ⁴
Zxx	415.68 cm ³
Weight	53.46 kg/m
Area	68.05 cm ²
Ryy	5.94 cm

Option	Spec. Suffix
Lintray (see p6)	Prefix /L
Feature Brick (see p9)	Suffix /FB
Outer step of 20mm	Suffix /ST
Flat Base (no plaster key)	Suffix /F
Cant Outer (50mm)	Suffix /C
Wide Outer (125mm)	Suffix /WO

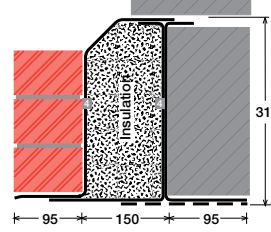
Permissible Load Ratio 1:1 - 1:19

Lintel Load Capacity Table

Opening Span	Lintel Length	Safe Load kN
600	900	190
900	1200	190
1200	1500	190
1500	1800	190
1800	2100	190
2100	2400	190
2400	2700	190
2700	3000	190
3000	3300	190
3300	3600	173
3600	3900	159
3900	4200	147
4200	4500	137
4500	4800	122
4800	5100	107
5100	5400	95
5400	5700	85
5700	6000	77
6000	6300	69
6300	6600	63
6600	6900	58
6900	7200	53
7200	7500	48
7500	7800	45
7800	8100	41
8100	8400	38

For material spec. see page 72

SUPER HEAVY DUTY/ LONG SPANS
HD4 250



Lintel Section Properties

lxx	8487.15 cm ⁴
Zxx	499.31 cm ³
Weight	48.46 kg/m
Area	61.69 cm ²
Ryy	7.39 cm

Option	Spec. Suffix
Lintray (see p6)	Prefix /L
Feature Brick (see p9)	Suffix /FB
Outer step of 20mm	Suffix /ST
Flat Base (no plaster key)	Suffix /F
Cant Outer (50mm)	Suffix /C
Wide Outer (125mm)	Suffix /WO

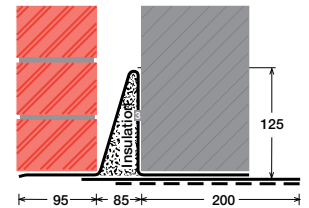
Permissible Load Ratio 1:1 - 1:19

Lintel Load Capacity Table

Opening Span	Lintel Length	Safe Load kN
600	900	228
900	1200	228
1200	1500	228
1500	1800	228
1800	2100	228
2100	2400	228
2400	2700	228
2700	3000	228
3000	3300	228
3300	3600	208
3600	3900	191
3900	4200	177
4200	4500	165
4500	4800	154
4800	5100	145
5100	5400	136
5400	5700	123
5700	6000	111
6000	6300	100
6300	6600	91
6600	6900	83
6900	7200	76
7200	7500	70
7500	7800	64
7800	8100	60
8100	8400	55

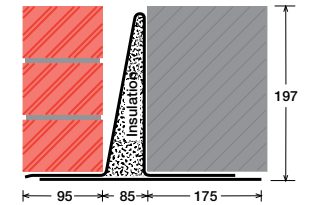
*Stainless Steel only

SC90EEa/WI



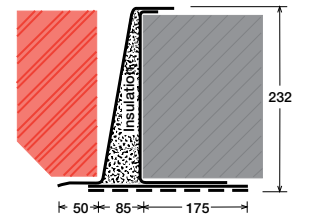
Lintel shown with optional wide inner (WI)

SC90EEb/F



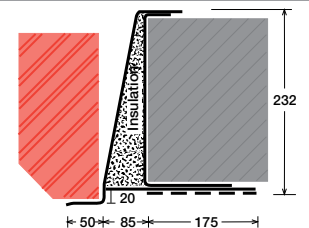
Lintel shown with optional flat base (F)

MC90EEb/C



Lintel shown with optional cant outer (C)

MC90EEb/ST/C



Lintel shown with optional step (ST) cant outer (C)