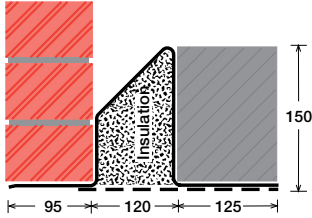


To suit walls with: Outer: 95mm - 115mm, Cavity: 120mm - 139mm, Inner: 125mm -

Cavity Wall Lintels - 95/120/125

LIGHT/STANDARD DUTY SC125Ea



Lintel Section Properties

Ixx	457.50 cm ⁴
Zxx	43.78 cm ³
Weight	15.21 kg/m
Area	19.36 cm ²
Ryy	8.08 cm

Typical Optional Features	
Option	Spec. Suffix
Lintray (see p6)	Prefix /L
Feature Brick (see p9)	Suffix /FB
Outer step 20mm	Suffix /ST
Flat Base (no plaster key)	Suffix /F
Cant Outer (50mm)	Suffix /C
Wide Outer (125mm)	Suffix /WO

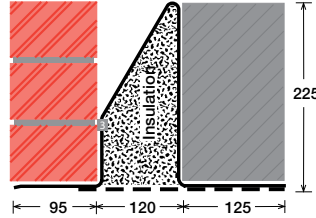
Permissible Load Ratio 1:1 - 1:5

Lintel Load Capacity Table

Opening Span	Lintel Length	Safe Load kN
600	900	35
750	1050	35
900	1200	35
1050	1350	35
1200	1500	35
1350	1650	35
1500	1800	35
1650	1950	35
1800	2100	32
1950	2250	30
2100	2400	28
2250	2550	26
2400	2700	24
2550	2850	23

Where no load is shown a heavier duty lintel is needed

STANDARD DUTY SC125Eb



Lintel Section Properties

Ixx	1163.28 cm ⁴
Zxx	76.75 cm ³
Weight	18.18 kg/m
Area	23.14 cm ²
Ryy	7.87 cm

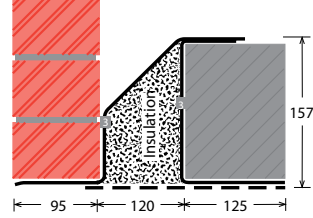
Typical Optional Features	
Option	Spec. Suffix
Lintray (see p6)	Prefix /L
Feature Brick (see p9)	Suffix /FB
Outer step of 20mm	Suffix /ST
Flat Base (no plaster key)	Suffix /F
Cant Outer (50mm)	Suffix /C
Wide Outer (125mm)	Suffix /WO

Permissible Load Ratio 1:1 - 1:5

Lintel Load Capacity Table

Opening Span	Lintel Length	Safe Load kN
600	900	56
750	1050	56
900	1200	56
1050	1350	56
1200	1500	56
1350	1650	56
1500	1800	56
1650	1950	56
1800	2100	56
1950	2250	52
2100	2400	49
2250	2550	46
2400	2700	43
2550	2850	40
2700	3000	38
2850	3150	36
3000	3300	35
3150	3450	33
3300	3600	32
3450	3750	30
3600	3900	29
3750	4050	28
3900	4200	27
4050	4350	26
4200	4500	25
4350	4650	24
4500	4800	23

MEDIUM DUTY MC125Ea



Lintel Section Properties

Ixx	812.99 cm ⁴
Zxx	86.30 cm ³
Weight	18.06 kg/m
Area	22.99 cm ²
Ryy	7.88 cm

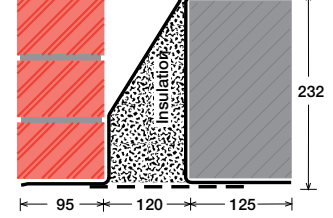
Typical Optional Features	
Option	Spec. Suffix
Lintray (see p6)	Prefix /L
Feature Brick (see p9)	Suffix /FB
Outer step of 20mm	Suffix /ST
Flat Base (no plaster key)	Suffix /F
Cant Outer (50mm)	Suffix /C
Wide Outer (125mm)	Suffix /WO

Permissible Load Ratio 1:1 - 1:19

Lintel Load Capacity Table

Opening Span	Lintel Length	Safe Load kN
600	900	50
750	1050	50
900	1200	50
1050	1350	50
1200	1500	50
1350	1650	50
1500	1800	50
1650	1950	50
1800	2100	50
1950	2250	50
2100	2400	50
2250	2550	50
2400	2700	48
2550	2850	46
2700	3000	43
2850	3150	40
3000	3300	36
3150	3450	33
3300	3600	30
3450	3750	28
3600	3900	25
3750	4050	23
3900	4200	22
4050	4350	20
4200	4500	19
4350	4650	17
4500	4800	16

MEDIUM/HEAVY DUTY MC125Eb



Lintel Section Properties

Ixx	1941.35 cm ⁴
Zxx	142.71 cm ³
Weight	21.24 kg/m
Area	27.03 cm ²
Ryy	7.73 cm

Typical Optional Features	
Option	Spec. Suffix
Lintray (see p6)	Prefix /L
Feature Brick (see p9)	Suffix /FB
Outer step of 20mm	Suffix /ST
Flat Base (no plaster key)	Suffix /F
Cant Outer (50mm)	Suffix /C
Wide Outer (125mm)	Suffix /WO

Permissible Load Ratio 1:1 - 1:19

Lintel Load Capacity Table

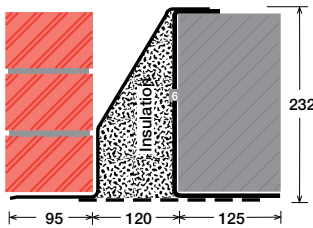
Opening Span	Lintel Length	Safe Load kN
600	900	70
750	1050	70
900	1200	70
1050	1350	70
1200	1500	70
1350	1650	70
1500	1800	70
1650	1950	70
1800	2100	70
1950	2250	70
2100	2400	70
2250	2550	70
2400	2700	70
2550	2850	70
2700	3000	70
2850	3150	68
3000	3300	65
3150	3450	62
3300	3600	59
3450	3750	57
3600	3900	54
3750	4050	52
3900	4200	50
4050	4350	48
4200	4500	45
4350	4650	42
4500	4800	40

150mm (Cavity+inner must be < 270mm). Specials also available

EXAMPLES:

Within this basic wall construction there is considerable scope to tailor the section shape to your exact requirement using our many options and usually the lead time remains the same! These examples show possible option specifications:

**HEAVY DUTY
HC125E**



Lintel Section Properties

lxx	2909.72 cm ⁴
Zxx	216.46 cm ³
Weight	31.07 kg/m
Area	39.56 cm ²
Ryy	7.11 cm

Typical Optional Features

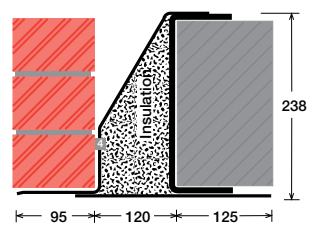
Option	Spec. Suffix
Lintray (see p6)	Prefix /L
Feature Brick (see p9)	Suffix /FB
Outer step of 20mm	Suffix /ST
Flat Base (no plaster key)	Suffix /F
Cant Outer (50mm)	Suffix /C
Wide Outer (125mm)	Suffix /WO

Permissible Load Ratio 1:1 - 1:19

Lintel Load Capacity Table

Opening Span	Lintel Length	Safe Load kN
600	900	80
750	1050	80
900	1200	80
1050	1350	80
1200	1500	80
1350	1650	80
1500	1800	80
1650	1950	80
1800	2100	80
1950	2250	80
2100	2400	80
2250	2550	80
2400	2700	80
2550	2850	80
2700	3000	80
2850	3150	80
3000	3300	80
3150	3450	80
3300	3600	80
3450	3750	80
3600	3900	80
3750	4050	79
3900	4200	76
4050	4350	73
4200	4500	68
4350	4650	64
4500	4800	60

**HEAVY DUTY/LONG SPANS
EAL6 125E**



Lintel Section Properties

lxx	5697.14 cm ⁴
Zxx	408.84 cm ³
Weight	52.92 kg/m
Area	67.37 cm ²
Ryy	7.08 cm

Typical Optional Features

Option	Spec. Suffix
Lintray (see p6)	Prefix /L
Feature Brick (see p9)	Suffix /FB
Outer step of 20mm	Suffix /ST
Flat Base (no plaster key)	Suffix /F
Cant Outer (50mm)	Suffix /C
Wide Outer (125mm)	Suffix /WO

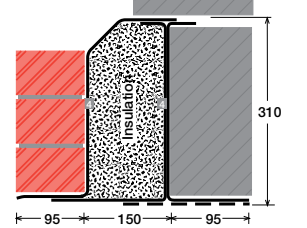
Permissible Load Ratio 1:1 - 1:19

Lintel Load Capacity Table

Opening Span	Lintel Length	Safe Load kN
600	900	186
900	1200	186
1200	1500	186
1500	1800	186
1800	2100	186
2100	2400	186
2400	2700	186
2700	3000	186
3000	3300	186
3300	3600	170
3600	3900	156
3900	4200	145
4200	4500	134
4500	4800	118
4800	5100	104
5100	5400	92
5400	5700	82
5700	6000	74
6000	6300	67
6300	6600	61
6600	6900	56
6900	7200	51
7200	7500	47
7500	7800	43
7800	8100	40
8100	8400	37

For material spec. see page 72

**SUPER HEAVY DUTY/ LONG SPANS
HD4 250**



Lintel Section Properties

lxx	8487.15 cm ⁴
Zxx	499.31 cm ³
Weight	48.46 kg/m
Area	61.69 cm ²
Ryy	7.39 cm

Typical Optional Features

Option	Spec. Suffix
Lintray (see p6)	Prefix /L
Feature Brick (see p9)	Suffix /FB
Outer step of 20mm	Suffix /ST
Flat Base (no plaster key)	Suffix /F
Cant Outer (50mm)	Suffix /C
Wide Outer (125mm)	Suffix /WO

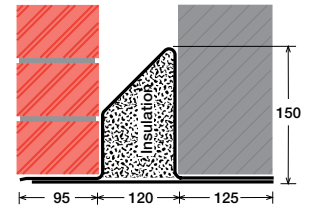
Permissible Load Ratio 1:1 - 1:19

Lintel Load Capacity Table

Opening Span	Lintel Length	Safe Load kN
600	900	228
900	1200	228
1200	1500	228
1500	1800	228
1800	2100	228
2100	2400	228
2400	2700	228
2700	3000	228
3000	3300	228
3300	3600	208
3600	3900	191
3900	4200	177
4200	4500	165
4500	4800	154
4800	5100	145
5100	5400 *	136
5400	5700 *	123
5700	6000 *	111
6000	6300 *	100
6300	6600 *	91
6600	6900 *	83
6900	7200 *	76
7200	7500 *	70
7500	7800 *	64
7800	8100 *	60
8100	8400 *	55

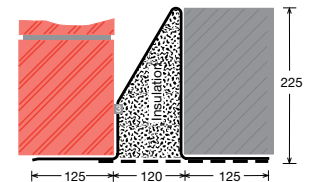
*Stainless Steel only

SC125Ea/F



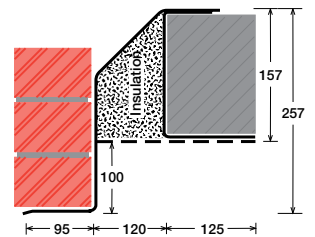
Lintel shown with optional flat base (F)

SC125Eb/WO



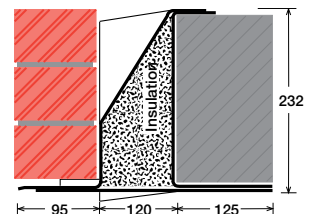
Lintel shown with optional wide outer (WO)

MC125Ea/ST 100



Lintel shown with optional 100mm step (ST 100)

L/MC125Eb/F



Lintel shown with optional lintray (L) and flat base (F)