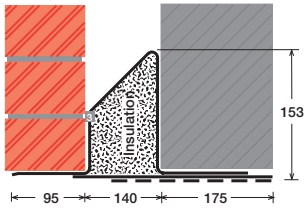


To suit walls with: Outer: 95mm - 115mm, Cavity: 140mm - 160mm, Inner: 175mm -

# Cavity Wall Lintels - 100/140/175

## LIGHT/STANDARD DUTY SC150EEa



### Lintel Section Properties

lxx	624.36 cm <sup>4</sup>
Zxx	53.25 cm <sup>3</sup>
Weight	22.29 kg/m
Area	28.37 cm <sup>2</sup>
Ryy	9.66 cm

Typical Optional Features	
Option	Spec. Suffix
Lintray (see p6)	Prefix /L
Feature Brick (see p9)	Suffix /FB
Outer step 20mm	Suffix /ST
Flat Base (no plaster key)	Suffix /F
Cant Outer (50mm)	Suffix /C
Wide Outer (125mm)	Suffix /WO

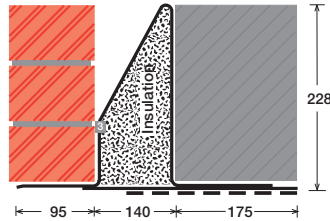
Permissible Load Ratio 1:1 - 1:5

### Lintel Load Capacity Table

Opening Span	Lintel Length	Safe Load kN
600	900	39
750	1050	39
900	1200	39
1050	1350	39
1200	1500	39
1350	1650	39
1500	1800	39
1650	1950	39
1800	2100	39
1950	2250	36
2100	2400	34
2250	2550	31
2400	2700	30
2550	2850	28
2700	3000	26

Where no load is shown a heavier duty lintel is needed

## STANDARD DUTY SC150EEb



### Lintel Section Properties

lxx	1619.41 cm <sup>4</sup>
Zxx	93.17 cm <sup>3</sup>
Weight	26.78 kg/m
Area	34.09 cm <sup>2</sup>
Ryy	10.28 cm

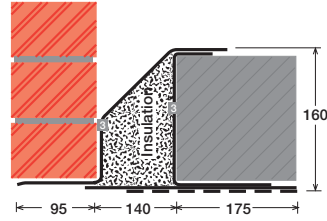
Typical Optional Features	
Option	Spec. Suffix
Lintray (see p6)	Prefix /L
Feature Brick (see p9)	Suffix /FB
Outer step of 20mm	Suffix /ST
Flat Base (no plaster key)	Suffix /F
Cant Outer (50mm)	Suffix /C
Wide Outer (125mm)	Suffix /WO

Permissible Load Ratio 1:1 - 1:5

### Lintel Load Capacity Table

Opening Span	Lintel Length	Safe Load kN
600	900	59
750	1050	59
900	1200	59
1050	1350	59
1200	1500	59
1350	1650	59
1500	1800	59
1650	1950	59
1800	2100	59
1950	2250	59
2100	2400	59
2250	2550	55
2400	2700	52
2550	2850	49
2700	3000	47
2850	3150	44
3000	3300	42
3150	3450	40
3300	3600	38
3450	3750	37
3600	3900	35
3750	4050	34
3900	4200	33
4050	4350	31
4200	4500	30
4350	4650	29
4500	4800	28

## MEDIUM DUTY MC150EEa



### Lintel Section Properties

lxx	1102.34 cm <sup>4</sup>
Zxx	96.34 cm <sup>3</sup>
Weight	26.50 kg/m
Area	33.74 cm <sup>2</sup>
Ryy	10.20 cm

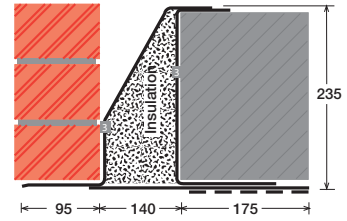
Typical Optional Features	
Option	Spec. Suffix
Lintray (see p6)	Prefix /L
Feature Brick (see p9)	Suffix /FB
Outer step of 20mm	Suffix /ST
Flat Base (no plaster key)	Suffix /F
Cant Outer (50mm)	Suffix /C
Wide Outer (125mm)	Suffix /WO

Permissible Load Ratio 1:1 - 1:19

### Lintel Load Capacity Table

Opening Span	Lintel Length	Safe Load kN
600	900	50
750	1050	50
900	1200	50
1050	1350	50
1200	1500	50
1350	1650	50
1500	1800	50
1650	1950	50
1800	2100	50
1950	2250	50
2100	2400	50
2250	2550	50
2400	2700	50
2550	2850	50
2700	3000	48
2850	3150	46
3000	3300	44
3150	3450	42
3300	3600	40
3450	3750	38
3600	3900	35
3750	4050	32
3900	4200	30
4050	4350	28
4200	4500	26
4350	4650	24
4500	4800	22

## MEDIUM/HEAVY DUTY MC150EEb



### Lintel Section Properties

lxx	2609.51 cm <sup>4</sup>
Zxx	158.96 cm <sup>3</sup>
Weight	29.55 kg/m
Area	37.61 cm <sup>2</sup>
Ryy	9.96 cm

Typical Optional Features	
Option	Spec. Suffix
Lintray (see p6)	Prefix /L
Feature Brick (see p9)	Suffix /FB
Outer step of 20mm	Suffix /ST
Flat Base (no plaster key)	Suffix /F
Cant Outer (50mm)	Suffix /C
Wide Outer (125mm)	Suffix /WO

Permissible Load Ratio 1:1 - 1:19

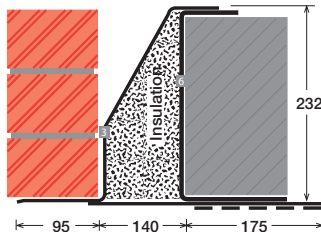
### Lintel Load Capacity Table

Opening Span	Lintel Length	Safe Load kN
600	900	70
750	1050	70
900	1200	70
1050	1350	70
1200	1500	70
1350	1650	70
1500	1800	70
1650	1950	70
1800	2100	70
1950	2250	70
2100	2400	70
2250	2550	70
2400	2700	70
2550	2850	70
2700	3000	70
2850	3150	70
3000	3300	70
3150	3450	69
3300	3600	66
3450	3750	63
3600	3900	61
3750	4050	58
3900	4200	56
4050	4350	54
4200	4500	52
4350	4650	50
4500	4800	49

We can make even wider inners! Suffix/WI

Within this basic wall construction there is considerable scope to tailor the section shape to your exact requirement using our many options and usually the lead time remains the same! These examples show possible option specifications:

HEAVY DUTY  
**HC150EE**



Lintel Section Properties

lxx	3538.99 cm <sup>4</sup>
Zxx	232.09 cm <sup>3</sup>
Weight	37.75 kg/m
Area	48.05 cm <sup>2</sup>
Ryy	8.39 cm

Typical Optional Features

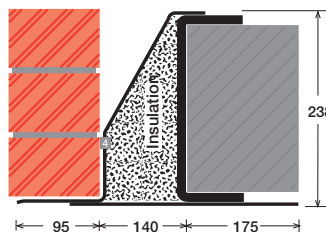
Option	Spec. Suffix
Lintray (see p6)	Prefix /L
Feature Brick (see p9)	Suffix /FB
Outer step of 20mm	Suffix /ST
Flat Base (no plaster key)	Suffix /F
Cant Outer (50mm)	Suffix /C
Wide Outer (125mm)	Suffix /WO

Permissible Load Ratio 1:1 - 1:19

Lintel Load Capacity Table

Opening Span	Lintel Length	Safe Load kN
600	900	80
750	1050	80
900	1200	80
1050	1350	80
1200	1500	80
1350	1650	80
1500	1800	80
1650	1950	80
1800	2100	80
1950	2250	80
2100	2400	80
2250	2550	80
2400	2700	80
2550	2850	80
2700	3000	80
2850	3150	80
3000	3300	80
3150	3450	80
3300	3600	80
3450	3750	80
3600	3900	80
3750	4050	80
3900	4200	80
4050	4350	79
4200	4500	76
4350	4650	74
4500	4800	71

HEAVY DUTY/LONG SPANS  
**EAL6 150EE**



Lintel Section Properties

lxx	5840.08 cm <sup>4</sup>
Zxx	404.14 cm <sup>3</sup>
Weight	55.26 kg/m
Area	70.34 cm <sup>2</sup>
Ryy	8.16 cm

Typical Optional Features

Option	Spec. Suffix
Lintray (see p6)	Prefix /L
Feature Brick (see p9)	Suffix /FB
Outer step of 20mm	Suffix /ST
Flat Base (no plaster key)	Suffix /F
Cant Outer (50mm)	Suffix /C
Wide Outer (125mm)	Suffix /WO

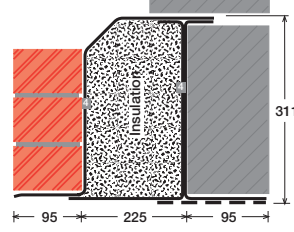
Permissible Load Ratio 1:1 - 1:19

Lintel Load Capacity Table

Opening Span	Lintel Length	Safe Load kN
600	900	184
900	1200	184
1200	1500	184
1500	1800	184
1800	2100	184
2100	2400	184
2400	2700	184
2700	3000	184
3000	3300	184
3300	3600	168
3600	3900	155
3900	4200	143
4200	4500	133
4500	4800	121
4800	5100	106
5100	5400	94
5400	5700	84
5700	6000	76
6000	6300	69
6300	6600	62
6600	6900	57
6900	7200	52
7200	7500	48
7500	7800	44
7800	8100	41
8100	8400	38

For material spec. see page 72

SUPER HEAVY DUTY/ LONG SPANS  
**HD4 325**



Lintel Section Properties

lxx	10895.70 cm <sup>4</sup>
Zxx	630.21 cm <sup>3</sup>
Weight	56.59 kg/m
Area	72.03 cm <sup>2</sup>
Ryy	10.73 cm

Typical Optional Features

Option	Spec. Suffix
Lintray (see p6)	Prefix /L
Feature Brick (see p9)	Suffix /FB
Outer step of 20mm	Suffix /ST
Flat Base (no plaster key)	Suffix /F
Cant Outer (50mm)	Suffix /C
Wide Outer (125mm)	Suffix /WO

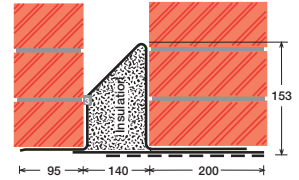
Permissible Load Ratio 1:1 - 1:19

Lintel Load Capacity Table

Opening Span	Lintel Length	Safe Load kN
600	900	288
900	1200	288
1200	1500	288
1500	1800	288
1800	2100	288
2100	2400	288
2400	2700	288
2700	3000	288
3000	3300	288
3300	3600	263
3600	3900	242
3900	4200	224
4200	4500	208
4500	4800	195
4800	5100	183
5100	5400	172
5400	5700	158
5700	6000	142
6000	6300	129
6300	6600	117
6600	6900	107
6900	7200	98
7200	7500	90
7500	7800	83
7800	8100	77
8100	8400	71

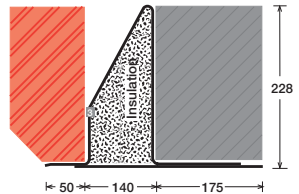
\*Stainless Steel only

**SC150EEa/WI**



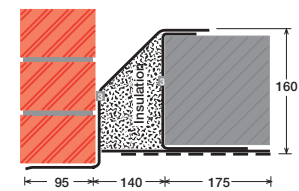
Lintel shown with optional wide inner (WI)

**SC150EEb/F/C**



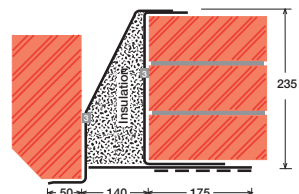
Lintel shown with optional flat base (F) and cant outer (C)

**MC150EEa/ST**



Lintel shown with optional step (ST)

**MC150EEb/ST/C**



Lintel shown with optional step (ST) and cant outer (C)