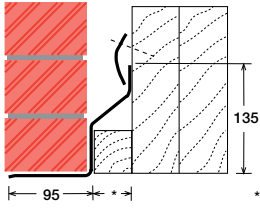


To suit walls with: Outer: 95mm - 115mm. Specials also available

# Timber Frame Lintels

## TF1

CAVITY: 40-110



\* Specify

### Lintel Section Properties

lxx	147.00 cm <sup>4</sup>
Zxx	16.09 cm <sup>3</sup>
Weight	5.66 kg/m
Area	7.20 cm <sup>2</sup>
Ryy	3.66 cm

### Typical Optional Features

Option	Spec. Suffix
Cavity 50mm :	/ 50
Cavity 60mm :	/ 60
Cavity 75mm :	/ 75
Cavity 90mm :	/ 90
Cavity 100mm :	/ 100
Cant Outer (50mm) :	/ C
Wide Outer (125mm) :	/ WO

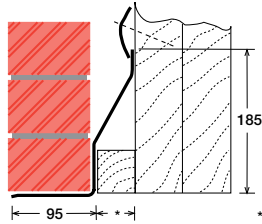
### Lintel Load Capacity Table

Opening Span	Lintel Length	Safe Load kN
600	900	16
750	1050	16
900	1200	16
1050	1350	16
1200	1500	10
1350	1650	10
1500	1800	10

Where no load is shown  
a heavier duty lintel is needed

## TF2

CAVITY: 40-110



\* Specify

### Lintel Section Properties

lxx	361.00 cm <sup>4</sup>
Zxx	30.70 cm <sup>3</sup>
Weight	7.42 kg/m
Area	9.45 cm <sup>2</sup>
Ryy	3.55 cm

### Typical Optional Features

Option	Spec. Suffix
Lintray® :	/ L
Cavity 50mm :	/ 50
Cavity 60mm :	/ 60
Cavity 75mm :	/ 75
Cavity 90mm :	/ 90
Cavity 100mm :	/ 100
Cant Outer (50mm) :	/ C
Wide Outer (125mm) :	/ WO

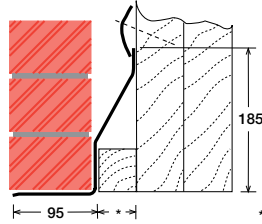
### Lintel Load Capacity Table

Opening Span	Lintel Length	Safe Load kN
600	900	20
750	1050	20
900	1200	20
1050	1350	20
1200	1500	20
1350	1650	20
1500	1800	15
1650	1950	15
1800	2100	10
1950	2250	10
2100	2400	8
2250	2550	8
2400	2700	8
2550	2850	8
2700	3000	8
2850	3150	8

Where no load is shown  
a heavier duty lintel is needed

## TF2/4

CAVITY: 40-115



\* Specify

### Lintel Section Properties

lxx	716.44 cm <sup>4</sup>
Zxx	93.85 cm <sup>3</sup>
Weight	10.38 kg/m
Area	13.22 cm <sup>2</sup>
Ryy	3.91 cm

### Typical Optional Features

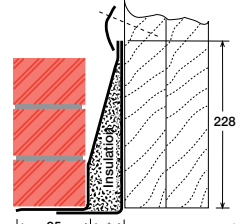
Option	Spec. Suffix
Lintray® :	/ L
Cavity 50mm :	/ 50
Cavity 60mm :	/ 60
Cavity 75mm :	/ 75
Cavity 90mm :	/ 90
Cavity 100mm :	/ 100
Cant Outer (50mm) :	/ C
Wide Outer (125mm) :	/ WO

### Lintel Load Capacity Table

Opening Span	Lintel Length	Safe Load kN
600	900	30
750	1050	30
900	1200	30
1050	1350	30
1200	1500	30
1350	1650	30
1500	1800	30
1650	1950	30
1800	2100	30
1950	2250	30
2100	2400	30
2250	2550	29
2400	2700	27
2550	2850	25
2700	3000	23
2850	3150	21
3000	3300	20
3150	3450	18
3300	3600	17
3450	3750	16
3600	3900	15
3750	4050	14
3900	4200	13
4050	4350	12
4200	4500	12
4350	4650	11
4500	4800	10

## TF3

CAVITY: 40-115



\* Specify

### Lintel Section Properties

lxx	1114.00 cm <sup>4</sup>
Zxx	76.44 cm <sup>3</sup>
Weight	16.04 kg/m
Area	20.40 cm <sup>2</sup>
Ryy	3.38 cm

### Typical Optional Features

Option	Spec. Suffix
Lintray® :	/ L
Cavity 50mm :	/ 50
Cavity 60mm :	/ 60
Cavity 75mm :	/ 75
Cavity 90mm :	/ 90
Cavity 100mm :	/ 100
Cant Outer (50mm) :	/ C
Wide Outer (125mm) :	/ WO

### Lintel Load Capacity Table

Opening Span	Lintel Length	Safe Load kN
600	900	40
750	1050	40
900	1200	40
1050	1350	40
1200	1500	40
1350	1650	40
1500	1800	40
1650	1950	40
1800	2100	40
1950	2250	40
2100	2400	40
2250	2550	39
2400	2700	37
2550	2850	35
2700	3000	33
2850	3150	31
3000	3300	30
3150	3450	28
3300	3600	27
3450	3750	26
3600	3900	25
3750	4050	24
3900	4200	23
4050	4350	22
4200	4500	22
4350	4650	21
4500	4800	20