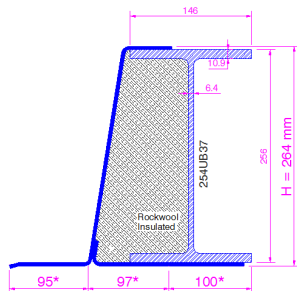


Structural Steel Lintels

CI lintel range

CI 27



*dimensions will vary with wall construction

Lintel section properties

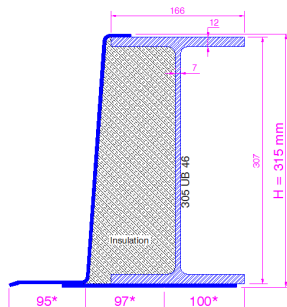
UB	UB 254 x 146 x 37
Ixx	8,136 cm ⁴
Zxx	691 cm ³
Weight	55.1 Kg/m
Area	70.7 cm ²
Ryy	10.73 cm

Permissible load ratio 1:1-1:19

Lintel load Capacity Table

Opening Span	Lintel Length	Safe Load kN
600	900	171.6
900	1200	171.6
1200	1500	171.6
1500	1800	171.6
1800	2100	171.6
2100	2400	171.6
2400	2700	171.6
2700	3000	171.6
3000	3300	171.6
3300	3600	171.6
3600	3900	171.6
3900	4200	171.6
4200	4500	171.6
4500	4800	171.4
4800	5100	150.7
5100	5400	133.5
5400	5700	119.0
5700	6000	106.8
6000	6300	96.4
6300	6600	87.5
6600	6900	79.7
6900	7200	72.9
7200	7500	67.0
7500	7800	63.3
7800	8100	58.5
8100	8400	54.2

CI 31



*dimensions will vary with wall construction

Lintel section properties

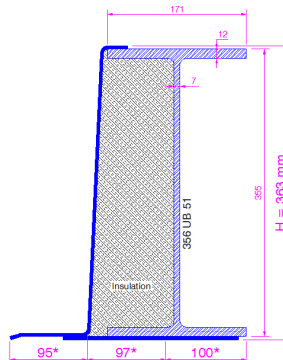
UB	UB 305 x 165 x 46
Ixx	13,761 cm ⁴
Zxx	1,003 cm ³
Weight	66.0 Kg/m
Area	84.6 cm ²
Ryy	12.75 cm

Permissible load ratio 1:1-1:19

Lintel load Capacity Table

Opening Span	Lintel Length	Safe Load kN
600	900	177.3
900	1200	177.3
1200	1500	177.3
1500	1800	177.3
1800	2100	177.3
2100	2400	177.3
2400	2700	177.3
2700	3000	177.3
3000	3300	177.3
3300	3600	177.3
3600	3900	177.3
3900	4200	177.3
4200	4500	177.3
4500	4800	177.3
4800	5100	177.3
5100	5400	177.3
5400	5700	177.3
5700	6000	177.3
6000	6300	163.1
6300	6600	147.9
6600	6900	134.8
6900	7200	123.3
7200	7500	113.3
7500	7800	104.4
7800	8100	96.5
8100	8400	89.5

CI36



*dimensions will vary with wall construction

Lintel section properties

UB	UB 356 x 171 x 51
Ixx	19,368 cm ⁴
Zxx	1,208 cm ³
Weight	71.8 Kg/m
Area	92.0 cm ²
Ryy	14.51 cm

Permissible load ratio 1:1-1:19

Lintel load Capacity Table

Opening Span	Lintel Length	Safe Load kN
600	900	199.2
900	1200	199.2
1200	1500	199.2
1500	1800	199.2
1800	2100	199.2
2100	2400	199.2
2400	2700	199.2
2700	3000	199.2
3000	3300	199.2
3300	3600	199.2
3600	3900	199.2
3900	4200	199.2
4200	4500	199.2
4500	4800	199.2
4800	5100	199.2
5100	5400	199.2
5400	5700	199.2
5700	6000	199.2
6000	6300	199.2
6300	6600	199.2
6600	6900	189.7
6900	7200	173.6
7200	7500	159.4
7500	7800	146.9
7800	8100	135.8
8100	8400	126.0

How To Specify a CI lintel; include full section name and wall construction then any optional features e.q plaster key.

Typical Optional Features

Option	Spec. Suffix
Plaster key	Suffix / P
Lintray	Prefix /L
Feature brick	Suffix / FB
Outer step (of 20mm)	Suffix / ST
Cant outer (50 mm)	Suffix / FB

Typical Wall Constructions

Construction	dimension (mm)
Outer leaf	100 - 125 - 150
Cavity	50-100-125-150-175
Inner leaf	100-125-150

*Can also be manufactured to suit solid walls with reduces load capacity.

Some cavities may be unavailable on wide I beams.

Material:

Base beam in structural steel S 355

How To Specify a CI lintel, include full section name and wall construction "CI "Outerleaf/Cavity/Innerleaf" and any additional options

Example: A CI 21 with 100mm brickwork, 100mm cavity and 125 mm block work with plaster key CI21-100/100/140 /P

The safe working load SWL represent the maximum un-factored load uniform distributed load the beam can carry.

Bearings; min 150mm each side, for high loads longer bearings may be needed, and bearing stresses should be checked