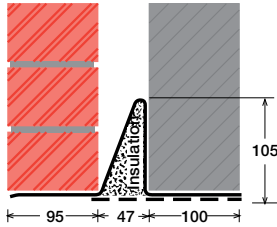


To suit walls with: Outer: 95mm - 115mm, Cavity: 47mm - 56mm, Inner: 100mm -

# Cavity Wall Lintels - 100/50/100

## LIGHT/STANDARD DUTY SC50a



### Lintel Section Properties

lxx	165.36 cm <sup>4</sup>
Zxx	20.93 cm <sup>3</sup>
Weight	11.40 kg/m
Area	14.51 cm <sup>2</sup>
Ryy	5.35 cm

### Typical Optional Features

Option	Spec. Suffix
Lintray (see p6)	Prefix /L
Feature Brick (see p9)	Suffix /FB
Outer step 20mm	Suffix /ST
Flat Base (no plaster key)	Suffix /F
Cant Outer (50mm)	Suffix /C
Wide Outer (125mm)	Suffix /WO

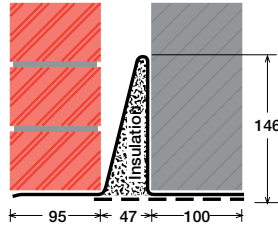
Permissible Load Ratio 1:1 - 1:5

### Lintel Load Capacity Table

Opening Span	Lintel Length	Safe Load kN
600	900	22
750	1050	22
900	1200	22
1050	1350	22
1200	1500	22
1350	1650	20
1500	1800	18

Where no load is shown  
a heavier duty lintel is needed

## STANDARD DUTY SC50b



### Lintel Section Properties

lxx	397.29 cm <sup>4</sup>
Zxx	38.43 cm <sup>3</sup>
Weight	13.62 kg/m
Area	17.34 cm <sup>2</sup>
Ryy	4.93 cm

### Typical Optional Features

Option	Spec. Suffix
Lintray (see p6)	Prefix /L
Feature Brick (see p9)	Suffix /FB
Outer step of 20mm	Suffix /ST
Flat Base (no plaster key)	Suffix /F
Cant Outer (50mm)	Suffix /C
Wide Outer (125mm)	Suffix /WO

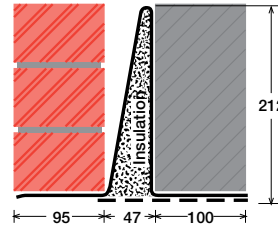
Permissible Load Ratio 1:1 - 1:5

### Lintel Load Capacity Table

Opening Span	Lintel Length	Safe Load kN
600	900	40
750	1050	40
900	1200	40
1050	1350	40
1200	1500	38
1350	1650	35
1500	1800	32
1650	1950	29
1800	2100	27
1950	2250	25
2100	2400	23
2250	2550	22
2400	2700	21
2550	2850	19
2700	3000	18
2850	3150	18

Where no load is shown  
a heavier duty lintel is needed

## MEDIUM DUTY SC50c



### Lintel Section Properties

lxx	1084.47 cm <sup>4</sup>
Zxx	76.89 cm <sup>3</sup>
Weight	17.30 kg/m
Area	22.02 cm <sup>2</sup>
Ryy	4.42 cm

### Typical Optional Features

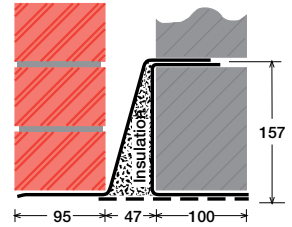
Option	Spec. Suffix
Lintray (see p6)	Prefix /L
Feature Brick (see p9)	Suffix /FB
Outer step of 20mm	Suffix /ST
Flat Base (no plaster key)	Suffix /F
Cant Outer (50mm)	Suffix /C
Wide Outer (125mm)	Suffix /WO

Permissible Load Ratio 1:1 - 1:5

### Lintel Load Capacity Table

Opening Span	Lintel Length	Safe Load kN
600	900	50
750	1050	50
900	1200	50
1050	1350	50
1200	1500	50
1350	1650	50
1500	1800	50
1650	1950	50
1800	2100	50
1950	2250	50
2100	2400	47
2250	2550	44
2400	2700	42
2550	2850	39
2700	3000	37
2850	3150	36
3000	3300	34
3150	3450	32
3300	3600	31
3450	3750	30
3600	3900	28
3750	4050	27
3900	4200	26
4050	4350	25
4200	4500	24
4350	4650	23
4500	4800	21

## MEDIUM/HEAVY DUTY MC50a



### Lintel Section Properties

lxx	825.45 cm <sup>4</sup>
Zxx	85.90 cm <sup>3</sup>
Weight	16.90 kg/m
Area	21.51 cm <sup>2</sup>
Ryy	6.25 cm

### Typical Optional Features

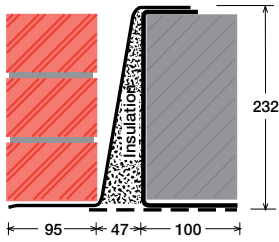
Option	Spec. Suffix
Lintray (see p6)	Prefix /L
Feature Brick (see p9)	Suffix /FB
Outer step of 20mm	Suffix /ST
Flat Base (no plaster key)	Suffix /F
Cant Outer (50mm)	Suffix /C
Wide Outer (125mm)	Suffix /WO

Permissible Load Ratio 1:1 - 1:19

### Lintel Load Capacity Table

Opening Span	Lintel Length	Safe Load kN
600	900	40
750	1050	40
900	1200	40
1050	1350	40
1200	1500	40
1350	1650	40
1500	1800	40
1650	1950	40
1800	2100	40
1950	2250	40
2100	2400	40
2250	2550	40
2400	2700	38
2550	2850	36
2700	3000	34
2850	3150	32
3000	3300	31
3150	3450	29
3300	3600	28
3450	3750	27
3600	3900	25
3750	4050	23
3900	4200	21
4050	4350	20
4200	4500	18
4350	4650	17
4500	4800	16

HEAVY DUTY  
**MC50b**



**Lintel Section Properties**

lxx	1932.45 cm <sup>4</sup>
Zxx	141.68 cm <sup>3</sup>
Weight	20.52 kg/m
Area	26.12 cm <sup>2</sup>
Ryy	4.20 cm

**Typical Optional Features**

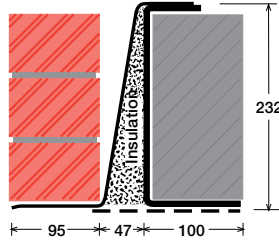
<i>Option</i>	<i>Spec. Suffix</i>
<b>Lintray</b> (see p6)	<b>Prefix /L</b>
<b>Feature Brick</b> (see p9)	<b>Suffix /FB</b>
<b>Outer step</b> of 20mm	<b>Suffix /ST</b>
<b>Flat Base</b> (no plaster key)	<b>Suffix /F</b>
<b>Cant Outer</b> (50mm)	<b>Suffix /C</b>
<b>Wide Outer</b> (125mm)	<b>Suffix /WO</b>

Permissible Load Ratio 1:1 - 1:19

Lintel Load Capacity Table

Opening Span	Lintel Length	Safe Load kN
600	900	60
750	1050	60
900	1200	60
1050	1350	60
1200	1500	60
1350	1650	60
1500	1800	60
1650	1950	60
1800	2100	60
1950	2250	60
2100	2400	60
2250	2550	60
2400	2700	60
2550	2850	57
2700	3000	54
2850	3150	51
3000	3300	49
3150	3450	47
3300	3600	45
3450	3750	43
3600	3900	41
3750	4050	39
3900	4200	38
4050	4350	37
4200	4500	35
4350	4650	34
4500	4800	33

HEAVY DUTY/LONG SPANS  
**HC50**



**Lintel Section Properties**

lxx	2719.19 cm <sup>4</sup>
Zxx	201.15 cm <sup>3</sup>
Weight	29.26 kg/m
Area	37.24 cm <sup>2</sup>
Ryy	3.99 cm

**Typical Optional Features**

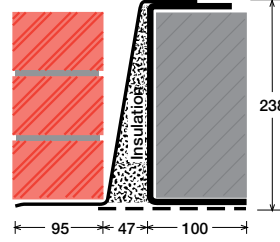
<i>Option</i>	<i>Spec. Suffix</i>
<b>Lintray</b> (see p6)	<b>Prefix /L</b>
<b>Feature Brick</b> (see p9)	<b>Suffix /FB</b>
<b>Outer step</b> of 20mm	<b>Suffix /ST</b>
<b>Flat Base</b> (no plaster key)	<b>Suffix /F</b>
<b>Cant Outer</b> (50mm)	<b>Suffix /C</b>
<b>Wide Outer</b> (125mm)	<b>Suffix /WO</b>

Permissible Load Ratio 1:1 - 1:19

Lintel Load Capacity Table

Opening Span	Lintel Length	Safe Load kN
600	900	80
750	1050	80
900	1200	80
1050	1350	80
1200	1500	80
1350	1650	80
1500	1800	80
1650	1950	80
1800	2100	80
1950	2250	80
2100	2400	80
2250	2550	80
2400	2700	80
2550	2850	80
2700	3000	80
2850	3150	80
3000	3300	80
3150	3450	77
3300	3600	74
3450	3750	71
3600	3900	68
3750	4050	65
3900	4200	50
4050	4350	50
4200	4500	50
4350	4650	50
4500	4800	50

SUPER HEAVY DUTY/ LONG SPANS  
**EAL6 50**



**Lintel Section Properties**

lxx	5350.20 cm <sup>4</sup>
Zxx	406.77 cm <sup>3</sup>
Weight	49.59 kg/m
Area	63.12 cm <sup>2</sup>
Ryy	4.27 cm

**Typical Optional Features**

<i>Option</i>	<i>Spec. Suffix</i>
<b>Lintray</b> (see p6)	<b>Prefix /L</b>
<b>Feature Brick</b> (see p9)	<b>Suffix /FB</b>
<b>Outer step</b> of 20mm	<b>Suffix /ST</b>
<b>Flat Base</b> (no plaster key)	<b>Suffix /F</b>
<b>Cant Outer</b> (50mm)	<b>Suffix /C</b>
<b>Wide Outer</b> (125mm)	<b>Suffix /WO</b>

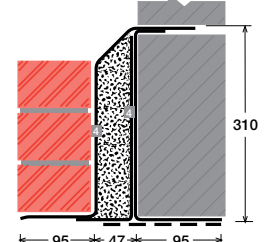
Permissible Load Ratio 1:1 - 1:19

Lintel Load Capacity Table

Opening Span	Lintel Length	Safe Load kN
600	900	185
900	1200	185
1200	1500	185
1500	1800	185
1800	2100	185
2100	2400	185
2400	2700	185
2700	3000	185
3000	3300	185
3300	3600	169
3600	3900	156
3900	4200	144
4200	4500	126
4500	4800	110
4800	5100	97
5100	5400	86
5400	5700	77
5700	6000	70
6000	6300	63
6300	6600	57
6600	6900	52
6900	7200	48
7200	7500	44
7500	7800	40
7800	8100	37
8100	8400	35

For material spec. see page 72

SUPER HEAVY DUTY/ LONG SPANS  
**HD4 150**



**Lintel Section Properties**

lxx	6476.04 cm <sup>4</sup>
Zxx	379.77 cm <sup>3</sup>
Weight	41.62 kg/m
Area	52.98 cm <sup>2</sup>
Ryy	3.80 cm

**Typical Optional Features**

<i>Option</i>	<i>Spec. Suffix</i>
<b>Lintray</b> (see p6)	<b>Prefix /L</b>
<b>Feature Brick</b> (see p9)	<b>Suffix /FB</b>
<b>Outer step</b> of 20mm	<b>Suffix /ST</b>
<b>Flat Base</b> (no plaster key)	<b>Suffix /F</b>
<b>Cant Outer</b> (50mm)	<b>Suffix /C</b>
<b>Wide Outer</b> (125mm)	<b>Suffix /WO</b>

Permissible Load Ratio 1:1 - 1:19

Lintel Load Capacity Table

Opening Span	Lintel Length	Safe Load kN
600	900	165
900	1200	165
1200	1500	165
1500	1800	165
1800	2100	165
2100	2400	165
2400	2700	165
2700	3000	165
3000	3300	165
3300	3600	158
3600	3900	145
3900	4200	135
4200	4500	125
4500	4800	117
4800	5100	110
5100	5400 *	104
5400	5700 *	94
5700	6000 *	84
6000	6300 *	76
6300	6600 *	69
6600	6900 *	63
6900	7200 *	58
7200	7500 *	53
7500	7800 *	49
7800	8100 *	45
8100	8400 *	42

\*Stainless Steel only