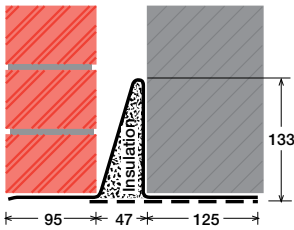


To suit walls with: Outer: 95mm - 115mm, Cavity: 47mm - 56mm, Inner: 125mm -

Cavity Wall Lintels - 100/50/125

LIGHT/STANDARD DUTY SC50Ea



Lintel Section Properties

lxx	323.96 cm ⁴
Zxx	33.02 cm ³
Weight	13.69 kg/m
Area	17.40 cm ²
Ryy	5.69 cm

Typical Optional Features

Option	Spec. Suffix
Lintray (see p6)	Prefix /L
Feature Brick (see p9)	Suffix /FB
Outer step 20mm	Suffix /ST
Flat Base (no plaster key)	Suffix /F
Cant Outer (50mm)	Suffix /C
Wide Outer (125mm)	Suffix /WO

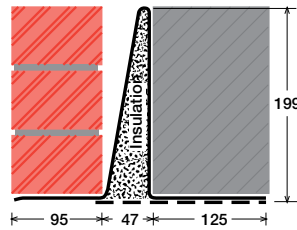
Permissible Load Ratio 1:1 - 1:19

Lintel Load Capacity Table

Opening Span	Lintel Length	Safe Load kN
600	900	40
750	1050	40
900	1200	40
1050	1350	40
1200	1500	40
1350	1650	40
1500	1800	40
1650	1950	40
1800	2100	23
1950	2250	21
2100	2400	20
2250	2550	19
2400	2700	18
2550	2850	17

Where no load is shown a heavier duty lintel is needed

STANDARD DUTY SC50Eb



Lintel Section Properties

lxx	959.30 cm ⁴
Zxx	70.13 cm ³
Weight	17.36 kg/m
Area	22.09 cm ²
Ryy	5.11 cm

Typical Optional Features

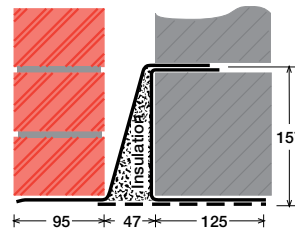
Option	Spec. Suffix
Lintray (see p6)	Prefix /L
Feature Brick (see p9)	Suffix /FB
Outer step of 20mm	Suffix /ST
Flat Base (no plaster key)	Suffix /F
Cant Outer (50mm)	Suffix /C
Wide Outer (125mm)	Suffix /WO

Permissible Load Ratio 1:1 - 1:19

Lintel Load Capacity Table

Opening Span	Lintel Length	Safe Load kN
600	900	50
750	1050	50
900	1200	50
1050	1350	50
1200	1500	50
1350	1650	50
1500	1800	50
1650	1950	47
1800	2100	44
1950	2250	41
2100	2400	38
2250	2550	36
2400	2700	34
2550	2850	32
2700	3000	30
2850	3150	29
3000	3300	27
3150	3450	26
3300	3600	25
3450	3750	24
3600	3900	23
3750	4050	22
3900	4200	21
4050	4350	20
4200	4500	20
4350	4650	18
4500	4800	18

MEDIUM DUTY MC50Ea



Lintel Section Properties

lxx	801.77 cm ⁴
Zxx	81.82 cm ³
Weight	17.18 kg/m
Area	23.07 cm ²
Ryy	5.09 cm

Typical Optional Features

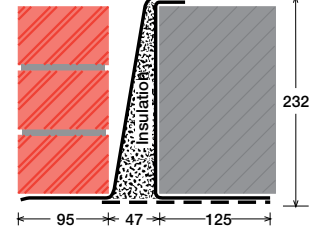
Option	Spec. Suffix
Lintray (see p6)	Prefix /L
Feature Brick (see p9)	Suffix /FB
Outer step of 20mm	Suffix /ST
Flat Base (no plaster key)	Suffix /F
Cant Outer (50mm)	Suffix /C
Wide Outer (125mm)	Suffix /WO

Permissible Load Ratio 1:1 - 1:19

Lintel Load Capacity Table

Opening Span	Lintel Length	Safe Load kN
600	900	40
750	1050	40
900	1200	40
1050	1350	40
1200	1500	40
1350	1650	40
1500	1800	40
1650	1950	40
1800	2100	40
1950	2250	40
2100	2400	40
2250	2550	38
2400	2700	36
2550	2850	34
2700	3000	32
2850	3150	30
3000	3300	29
3150	3450	28
3300	3600	26
3450	3750	25
3600	3900	24
3750	4050	22
3900	4200	21
4050	4350	19
4200	4500	18
4350	4650	17
4500	4800	16

MEDIUM/HEAVY DUTY MC50Eb



Lintel Section Properties

lxx	1873.98 cm ⁴
Zxx	130.53 cm ³
Weight	20.67 kg/m
Area	26.31 cm ²
Ryy	4.71 cm

Typical Optional Features

Option	Spec. Suffix
Lintray (see p6)	Prefix /L
Feature Brick (see p9)	Suffix /FB
Outer step of 20mm	Suffix /ST
Flat Base (no plaster key)	Suffix /F
Cant Outer (50mm)	Suffix /C
Wide Outer (125mm)	Suffix /WO

Permissible Load Ratio 1:1 - 1:19

Lintel Load Capacity Table

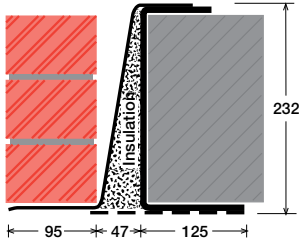
Opening Span	Lintel Length	Safe Load kN
600	900	60
750	1050	60
900	1200	60
1050	1350	60
1200	1500	60
1350	1650	60
1500	1800	60
1650	1950	60
1800	2100	60
1950	2250	60
2100	2400	60
2250	2550	60
2400	2700	57
2550	2850	54
2700	3000	51
2850	3150	49
3000	3300	46
3150	3450	44
3300	3600	42
3450	3750	41
3600	3900	39
3750	4050	38
3900	4200	36
4050	4350	35
4200	4500	34
4350	4650	33
4500	4800	32

140mm (Cavity+inner must be < 190mm). Specials also available

EXAMPLES:

Within this basic wall construction there is considerable scope to tailor the section shape to your exact requirement using our many options and usually the lead time remains the same! These examples show possible option specifications:

**HEAVY DUTY
HC50E**



Lintel Section Properties

lxx	3059.89 cm ⁴
Zxx	225.80 cm ³
Weight	31.45 kg/m
Area	40.03 cm ²
Ryy	4.65 cm

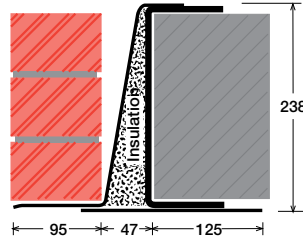
Typical Optional Features	
Option	Spec. Suffix
Lintray (see p6)	Prefix /L
Feature Brick (see p9)	Suffix /FB
Outer step of 20mm	Suffix /ST
Flat Base (no plaster key)	Suffix /F
Cant Outer (50mm)	Suffix /C
Wide Outer (125mm)	Suffix /WO

Permissible Load Ratio 1:1 - 1:19

Lintel Load Capacity Table

Opening Span	Lintel Length	Safe Load kN
600	900	80
750	1050	80
900	1200	80
1050	1350	80
1200	1500	80
1350	1650	80
1500	1800	80
1650	1950	80
1800	2100	80
1950	2250	80
2100	2400	80
2250	2550	80
2400	2700	80
2550	2850	80
2700	3000	80
2850	3150	80
3000	3300	80
3150	3450	77
3300	3600	74
3450	3750	71
3600	3900	68
3750	4050	65
3900	4200	63
4050	4350	61
4200	4500	59
4350	4650	57
4500	4800	55

**HEAVY DUTY/LONG SPANS
EAL6 50E**



Lintel Section Properties

lxx	5621.41 cm ⁴
Zxx	412.24 cm ³
Weight	51.28 kg/m
Area	65.27 cm ²
Ryy	4.65 cm

Typical Optional Features	
Option	Spec. Suffix
Lintray (see p6)	Prefix /L
Feature Brick (see p9)	Suffix /FB
Outer step of 20mm	Suffix /ST
Flat Base (no plaster key)	Suffix /F
Cant Outer (50mm)	Suffix /C
Wide Outer (125mm)	Suffix /WO

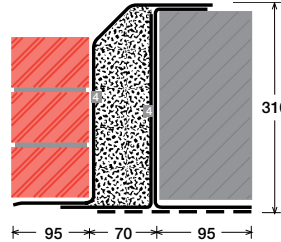
Permissible Load Ratio 1:1 - 1:19

Lintel Load Capacity Table

Opening Span	Lintel Length	Safe Load kN
600	900	188
900	1200	188
1200	1500	188
1500	1800	188
1800	2100	188
2100	2400	188
2400	2700	188
2700	3000	188
3000	3300	188
3300	3600	172
3600	3900	158
3900	4200	146
4200	4500	133
4500	4800	116
4800	5100	102
5100	5400	91
5400	5700	81
5700	6000	73
6000	6300	66
6300	6600	60
6600	6900	55
6900	7200	50
7200	7500	46
7500	7800	43
7800	8100	39
8100	8400	37

For material spec. see page 72

**SUPER HEAVY DUTY/ LONG SPANS
HD4 170**



Lintel Section Properties

lxx	6589.69 cm ⁴
Zxx	382.96 cm ³
Weight	42.09 kg/m
Area	53.58 cm ²
Ryy	4.44 cm

Typical Optional Features	
Option	Spec. Suffix
Lintray (see p6)	Prefix /L
Feature Brick (see p9)	Suffix /FB
Outer step of 20mm	Suffix /ST
Flat Base (no plaster key)	Suffix /F
Cant Outer (50mm)	Suffix /C
Wide Outer (125mm)	Suffix /WO

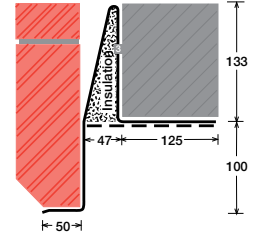
Permissible Load Ratio 1:1 - 1:19

Lintel Load Capacity Table

Opening Span	Lintel Length	Safe Load kN
600	900	175
900	1200	175
1200	1500	175
1500	1800	175
1800	2100	175
2100	2400	175
2400	2700	175
2700	3000	175
3000	3300	175
3300	3600	159
3600	3900	147
3900	4200	136
4200	4500	126
4500	4800	118
4800	5100	111
5100	5400	105
5400	5700	95
5700	6000	86
6000	6300	78
6300	6600	70
6600	6900	64
6900	7200	59
7200	7500	54
7500	7800	50
7800	8100	46
8100	8400	43

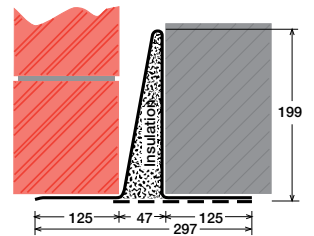
*Stainless Steel only

SC50Ea/ST100/C



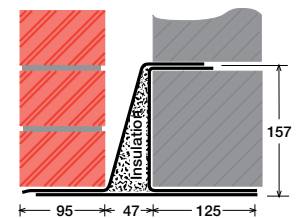
Lintel shown with optional step (ST100) and cant (C)

SC50Eb/WO



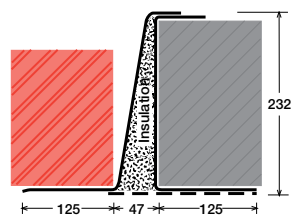
Lintel shown with optional wide outer (WO)

MC50Ea/F



Lintel shown with optional flat base (F)

MC50Eb/WO



Lintel shown with optional wide outer (WO)