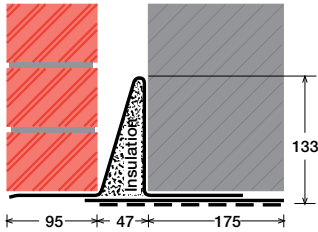


To suit walls with: Outer: 95mm - 115mm, Cavity: 47mm - 56mm, Inner: 175mm -

Cavity Wall Lintels - 100/50/175

LIGHT/STANDARD DUTY SC50EEa



Lintel Section Properties

lxx	342.33 cm ⁴
Zxx	33.83 cm ³
Weight	21.00 kg/m
Area	19.10 cm ²
Ryy	7.03 cm

Typical Optional Features

Option	Spec. Suffix
Lintray (see p6)	Prefix /L
Feature Brick (see p9)	Suffix /FB
Outer step 20mm	Suffix /ST
Flat Base (no plaster key)	Suffix /F
Cant Outer (50mm)	Suffix /C
Wide Outer (125mm)	Suffix /WO

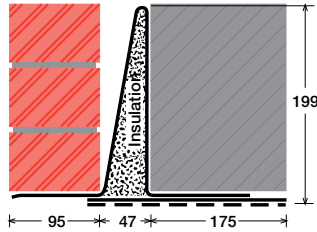
Permissible Load Ratio 1:1 - 1:19

Lintel Load Capacity Table

Opening Span	Lintel Length	Safe Load kN
600	900	30
750	1050	30
900	1200	30
1050	1350	30
1200	1500	28
1350	1650	26
1500	1800	24
1650	1950	22
1800	2100	20
1950	2250	19
2100	2400	16

Where no load is shown
a heavier duty lintel is needed

STANDARD DUTY SC50EEb



Lintel Section Properties

lxx	1019.28 cm ⁴
Zxx	72.18 cm ³
Weight	24.70 kg/m
Area	23.79 cm ²
Ryy	6.40 cm

Typical Optional Features

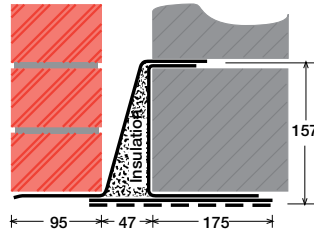
Option	Spec. Suffix
Lintray (see p6)	Prefix /L
Feature Brick (see p9)	Suffix /FB
Outer step of 20mm	Suffix /ST
Flat Base (no plaster key)	Suffix /F
Cant Outer (50mm)	Suffix /C
Wide Outer (125mm)	Suffix /WO

Permissible Load Ratio 1:1 - 1:19

Lintel Load Capacity Table

Opening Span	Lintel Length	Safe Load kN
600	900	50
750	1050	50
900	1200	50
1050	1350	50
1200	1500	50
1350	1650	50
1500	1800	50
1650	1950	50
1800	2100	50
1950	2250	47
2100	2400	44
2250	2550	41
2400	2700	39
2550	2850	37
2700	3000	35
2850	3150	33
3000	3300	32
3150	3450	30
3300	3600	29
3450	3750	28
3600	3900	27
3750	4050	26
3900	4200	25
4050	4350	24
4200	4500	23
4350	4650	21
4500	4800	20

MEDIUM DUTY MC50EEa



Lintel Section Properties

lxx	1090.46 cm ⁴
Zxx	101.98 cm ³
Weight	22.90 kg/m
Area	29.14 cm ²
Ryy	6.09 cm

Typical Optional Features

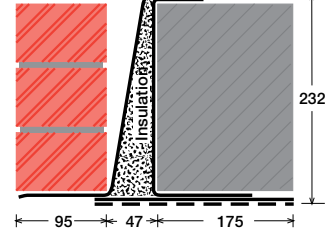
Option	Spec. Suffix
Lintray (see p6)	Prefix /L
Feature Brick (see p9)	Suffix /FB
Outer step of 20mm	Suffix /ST
Flat Base (no plaster key)	Suffix /F
Cant Outer (50mm)	Suffix /C
Wide Outer (125mm)	Suffix /WO

Permissible Load Ratio 1:1 - 1:19

Lintel Load Capacity Table

Opening Span	Lintel Length	Safe Load kN
600	900	40
750	1050	40
900	1200	40
1050	1350	40
1200	1500	40
1350	1650	40
1500	1800	40
1650	1950	40
1800	2100	40
1950	2250	40
2100	2400	40
2250	2550	40
2400	2700	40
2550	2850	40
2700	3000	40
2850	3150	40
3000	3300	40
3150	3450	38
3300	3600	37
3450	3750	35
3600	3900	33
3750	4050	30
3900	4200	28
4050	4350	26
4200	4500	20
4350	4650	18
4500	4800	18

MEDIUM/HEAVY DUTY MC50EEb



Lintel Section Properties

lxx	2630.51 cm ⁴
Zxx	175.09 cm ³
Weight	26.40 kg/m
Area	33.62 cm ²
Ryy	5.61 cm

Typical Optional Features

Option	Spec. Suffix
Lintray (see p6)	Prefix /L
Feature Brick (see p9)	Suffix /FB
Outer step of 20mm	Suffix /ST
Flat Base (no plaster key)	Suffix /F
Cant Outer (50mm)	Suffix /C
Wide Outer (125mm)	Suffix /WO

Permissible Load Ratio 1:1 - 1:19

Lintel Load Capacity Table

Opening Span	Lintel Length	Safe Load kN
600	900	60
750	1050	60
900	1200	60
1050	1350	60
1200	1500	60
1350	1650	60
1500	1800	60
1650	1950	60
1800	2100	60
1950	2250	60
2100	2400	60
2250	2550	60
2400	2700	60
2550	2850	60
2700	3000	60
2850	3150	60
3000	3300	60
3150	3450	60
3300	3600	60
3450	3750	58
3600	3900	56
3750	4050	54
3900	4200	40
4050	4350	40
4200	4500	40
4350	4650	40
4500	4800	40

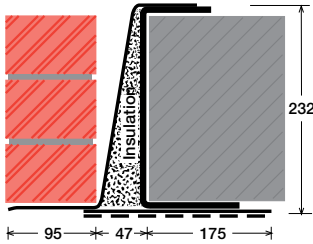
200mm (Cavity+inner must be < 250mm). Specials also available

EXAMPLES:

We can make even wider inners! Suffix/WI

Within this basic wall construction there is considerable scope to tailor the section shape to your exact requirement using our many options and usually the lead time remains the same! These examples show possible option specifications:

HEAVY DUTY
HC50EE



Lintel Section Properties

lxx	3526.84 cm ⁴
Zxx	249.82 cm ³
Weight	35.15 kg/m
Area	44.74 cm ²
Ryy	5.03 cm

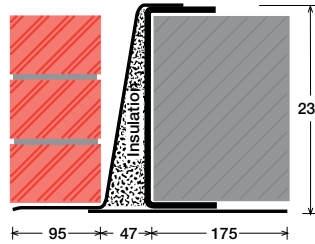
Typical Optional Features	
Option	Spec. Suffix
Lintray (see p6)	Prefix /L
Feature Brick (see p9)	Suffix /FB
Outer step of 20mm	Suffix /ST
Flat Base (no plaster key)	Suffix /F
Cant Outer (50mm)	Suffix /C
Wide Outer (125mm)	Suffix /WO

Permissible Load Ratio 1:1 - 1:19

Lintel Load Capacity Table

Opening Span	Lintel Length	Safe Load kN
600	900	80
750	1050	80
900	1200	80
1050	1350	80
1200	1500	80
1350	1650	80
1500	1800	80
1650	1950	80
1800	2100	80
1950	2250	80
2100	2400	80
2250	2550	80
2400	2700	80
2550	2850	80
2700	3000	80
2850	3150	80
3000	3300	80
3150	3450	80
3300	3600	80
3450	3750	80
3600	3900	80
3750	4050	75
3900	4200	70
4050	4350	60
4200	4500	60
4350	4650	60
4500	4800	60

HEAVY DUTY/LONG SPANS
EAL6 50EE



Lintel Section Properties

lxx	5817.93 cm ⁴
Zxx	418.60 cm ³
Weight	52.82 kg/m
Area	67.23 cm ²
Ryy	5.05 cm

Typical Optional Features	
Option	Spec. Suffix
Lintray (see p6)	Prefix /L
Feature Brick (see p9)	Suffix /FB
Outer step of 20mm	Suffix /ST
Flat Base (no plaster key)	Suffix /
F Cant Outer (50mm)	Suffix /C
Wide Outer (125mm)	Suffix /WO

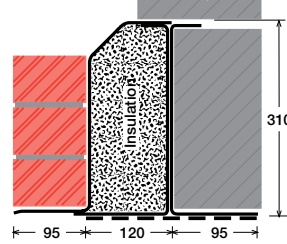
Permissible Load Ratio 1:1 - 1:19

Lintel Load Capacity Table

Opening Span	Lintel Length	Safe Load kN
600	900	191
900	1200	191
1200	1500	191
1500	1800	191
1800	2100	191
2100	2400	191
2400	2700	191
2700	3000	191
3000	3300	191
3300	3600	174
3600	3900	160
3900	4200	148
4200	4500	137
4500	4800	120
4800	5100	106
5100	5400	94
5400	5700	84
5700	6000	76
6000	6300	68
6300	6600	62
6600	6900	57
6900	7200	52
7200	7500	48
7500	7800	44
7800	8100	41
8100	8400	38

For material spec. see page 72

SUPER HEAVY DUTY/ LONG SPANS
HD4 220



Lintel Section Properties

lxx	7640.74 cm ⁴
Zxx	449.27 cm ³
Weight	45.52 kg/m
Area	57.95 cm ²
Ryy	6.27 cm

Typical Optional Features	
Option	Spec. Suffix
Lintray (see p6)	Prefix /L
Feature Brick (see p9)	Suffix /FB
Outer step of 20mm	Suffix /ST
Flat Base (no plaster key)	Suffix /F
Cant Outer (50mm)	Suffix /C
Wide Outer (125mm)	Suffix /WO

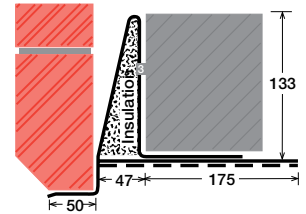
Permissible Load Ratio 1:1 - 1:19

Lintel Load Capacity Table

Opening Span	Lintel Length	Safe Load kN
600	900	196
900	1200	196
1200	1500	196
1500	1800	196
1800	2100	196
2100	2400	196
2400	2700	196
2700	3000	196
3000	3300	196
3300	3600	187
3600	3900	172
3900	4200	159
4200	4500	148
4500	4800	139
4800	5100	130
5100	5400	123
5400	5700	111
5700	6000	100
6000	6300	90
6300	6600	82
6600	6900	75
6900	7200	68
7200	7500	63
7500	7800	58
7800	8100	54
8100	8400	50

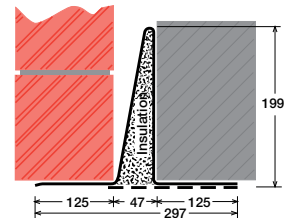
*Stainless Steel only

SC50EEa/ST/C



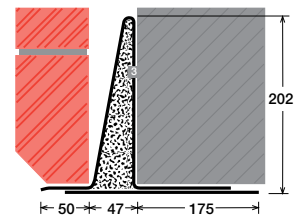
Lintel shown with optional step (ST) and cant (C)

SC50EEb/WO



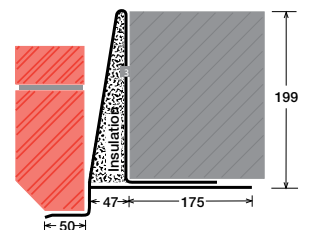
Lintel shown with optional wide outer (WO)

SC50EEb/F/C



Lintel shown with optional flat base (F) and cant (C)

SC50EEb/ST/F/C



Lintel shown with optional step (ST) and flat base (F) and cant (C)