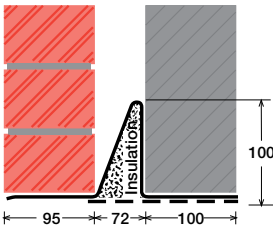


To suit walls with: Outer: 95mm - 115mm, Cavity: 72mm - 84mm, Inner: 100mm -

# Cavity Wall Lintels - 100/75/100

## LIGHT/STANDARD DUTY SC80a



### Lintel Section Properties

lxx	155.87 cm <sup>4</sup>
Zxx	20.72 cm <sup>3</sup>
Weight	11.39 kg/m
Area	14.50 cm <sup>2</sup>
Ryy	6.20 cm

Typical Optional Features	
Option	Spec. Suffix
Lintray (see p6)	Prefix /L
Feature Brick (see p9)	Suffix /FB
Outer step 20mm	Suffix /ST
Flat Base (no plaster key)	Suffix /F
Cant Outer (50mm)	Suffix /C
Wide Outer (125mm)	Suffix /WO

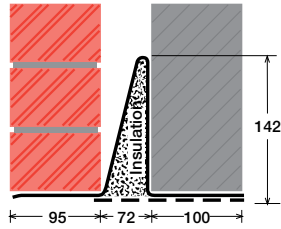
Permissible Load Ratio 1:1 - 1:5

### Lintel Load Capacity Table

Opening Span	Lintel Length	Safe Load kN
600	900	20
750	1050	20
900	1200	20
1050	1350	20
1200	1500	18
1350	1650	16
1500	1800	15
1650	1950	14

Where no load is shown a heavier duty lintel is needed

## STANDARD DUTY SC80b



### Lintel Section Properties

lxx	384.84 cm <sup>4</sup>
Zxx	38.03 cm <sup>3</sup>
Weight	13.56 kg/m
Area	17.26 cm <sup>2</sup>
Ryy	5.75 cm

Typical Optional Features	
Option	Spec. Suffix
Lintray (see p6)	Prefix /L
Feature Brick (see p9)	Suffix /FB
Outer step of 20mm	Suffix /ST
Flat Base (no plaster key)	Suffix /F
Cant Outer (50mm)	Suffix /C
Wide Outer (125mm)	Suffix /WO

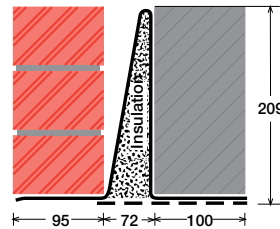
Permissible Load Ratio 1:1 - 1:5

### Lintel Load Capacity Table

Opening Span	Lintel Length	Safe Load kN
600	900	30
750	1050	30
900	1200	30
1050	1350	30
1200	1500	30
1350	1650	30
1500	1800	28
1650	1950	25
1800	2100	24
1950	2250	22
2100	2400	20
2250	2550	19
2400	2700	18
2550	2850	17

Where no load is shown a heavier duty lintel is needed

## MEDIUM DUTY SC80c



### Lintel Section Properties

lxx	1065.47 cm <sup>4</sup>
Zxx	76.12 cm <sup>3</sup>
Weight	17.17 kg/m
Area	21.86 cm <sup>2</sup>
Ryy	5.19 cm

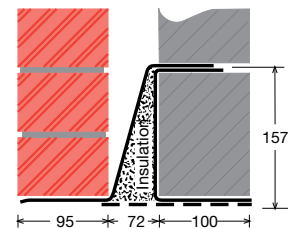
Typical Optional Features	
Option	Spec. Suffix
Lintray (see p6)	Prefix /L
Feature Brick (see p9)	Suffix /FB
Outer step of 20mm	Suffix /ST
Flat Base (no plaster key)	Suffix /F
Cant Outer (50mm)	Suffix /C
Wide Outer (125mm)	Suffix /WO

Permissible Load Ratio 1:1 - 1:5

### Lintel Load Capacity Table

Opening Span	Lintel Length	Safe Load kN
600	900	50
750	1050	50
900	1200	50
1050	1350	50
1200	1500	50
1350	1650	50
1500	1800	50
1650	1950	50
1800	2100	48
1950	2250	44
2100	2400	41
2250	2550	39
2400	2700	37
2550	2850	35
2700	3000	33
2850	3150	31
3000	3300	30
3150	3450	28
3300	3600	27
3450	3750	26
3600	3900	25
3750	4050	24
3900	4200	23
4050	4350	22
4200	4500	22
4350	4650	20
4500	4800	20

## MEDIUM/HEAVY DUTY MC80a



### Lintel Section Properties

lxx	827.32 cm <sup>4</sup>
Zxx	88.15 cm <sup>3</sup>
Weight	16.94 kg/m
Area	21.57 cm <sup>2</sup>
Ryy	5.48 cm

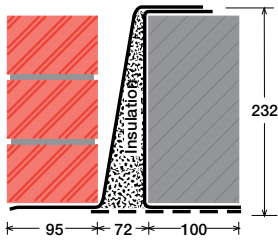
Typical Optional Features	
Option	Spec. Suffix
Lintray (see p6)	Prefix /L
Feature Brick (see p9)	Suffix /FB
Outer step of 20mm	Suffix /ST
Flat Base (no plaster key)	Suffix /F
Cant Outer (50mm)	Suffix /C
Wide Outer (125mm)	Suffix /WO

Permissible Load Ratio 1:1 - 1:19

### Lintel Load Capacity Table

Opening Span	Lintel Length	Safe Load kN
600	900	40
750	1050	40
900	1200	40
1050	1350	40
1200	1500	40
1350	1650	40
1500	1800	40
1650	1950	40
1800	2100	40
1950	2250	40
2100	2400	40
2250	2550	40
2400	2700	40
2550	2850	40
2700	3000	38
2850	3150	36
3000	3300	34
3150	3450	32
3300	3600	29
3450	3750	27
3600	3900	25
3750	4050	23
3900	4200	21
4050	4350	20
4200	4500	18
4350	4650	17
4500	4800	16

HEAVY DUTY  
**MC80b**



**Lintel Section Properties**

lxx	1926.32 cm <sup>4</sup>
Zxx	139.40- cm <sup>3</sup>
Weight	20.40 kg/m
Area	25.97 cm <sup>2</sup>
Ryy	4.93 cm

**Typical Optional Features**

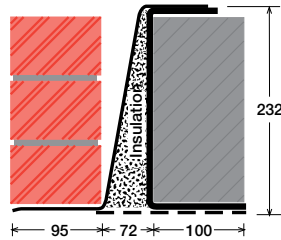
<i>Option</i>	<i>Spec. Suffix</i>
<b>Lintray</b> (see p6)	<b>Prefix /L</b>
<b>Feature Brick</b> (see p9)	<b>Suffix /FB</b>
<b>Outer step</b> of 20mm	<b>Suffix /ST</b>
<b>Flat Base</b> (no plaster key)	<b>Suffix /F</b>
<b>Cant Outer</b> (50mm)	<b>Suffix /C</b>
<b>Wide Outer</b> (125mm)	<b>Suffix /WO</b>

Permissible Load Ratio 1:1 - 1:19

Lintel Load Capacity Table

Opening Span	Lintel Length	Safe Load kN
600	900	60
750	1050	60
900	1200	60
1050	1350	60
1200	1500	60
1350	1650	60
1500	1800	60
1650	1950	60
1800	2100	60
1950	2250	60
2100	2400	60
2250	2550	60
2400	2700	60
2550	2850	60
2700	3000	60
2850	3150	58
3000	3300	55
3150	3450	52
3300	3600	50
3450	3750	48
3600	3900	46
3750	4050	44
3900	4200	43
4050	4350	41
4200	4500	40
4350	4650	38
4500	4800	37

HEAVY DUTY/LONG SPANS  
**HC80**



**Lintel Section Properties**

lxx	2755.14 cm <sup>4</sup>
Zxx	203.18- cm <sup>3</sup>
Weight	29.31 kg/m
Area	37.31 cm <sup>2</sup>
Ryy	4.73 cm

**Typical Optional Features**

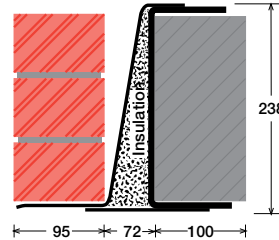
<i>Option</i>	<i>Spec. Suffix</i>
<b>Lintray</b> (see p6)	<b>Prefix /L</b>
<b>Feature Brick</b> (see p9)	<b>Suffix /FB</b>
<b>Outer step</b> of 20mm	<b>Suffix /ST</b>
<b>Flat Base</b> (no plaster key)	<b>Suffix /F</b>
<b>Cant Outer</b> (50mm)	<b>Suffix /C</b>
<b>Wide Outer</b> (125mm)	<b>Suffix /WO</b>

Permissible Load Ratio 1:1 - 1:19

Lintel Load Capacity Table

Opening Span	Lintel Length	Safe Load kN
600	900	80
750	1050	80
900	1200	80
1050	1350	80
1200	1500	80
1350	1650	80
1500	1800	80
1650	1950	80
1800	2100	80
1950	2250	80
2100	2400	80
2250	2550	80
2400	2700	80
2550	2850	80
2700	3000	80
2850	3150	80
3000	3300	80
3150	3450	77
3300	3600	73
3450	3750	70
3600	3900	67
3750	4050	65
3900	4200	63
4050	4350	60
4200	4500	58
4350	4650	56
4500	4800	55

SUPER HEAVY DUTY/ LONG SPANS  
**EAL6 80**



**Lintel Section Properties**

lxx	5421.04 cm <sup>4</sup>
Zxx	406.49- cm <sup>3</sup>
Weight	49.47 kg/m
Area	62.97 cm <sup>2</sup>
Ryy	4.96 cm

**Typical Optional Features**

<i>Option</i>	<i>Spec. Suffix</i>
<b>Lintray</b> (see p6)	<b>Prefix /L</b>
<b>Feature Brick</b> (see p9)	<b>Suffix /FB</b>
<b>Outer step</b> of 20mm	<b>Suffix /ST</b>
<b>Flat Base</b> (no plaster key)	<b>Suffix /F</b>
<b>Cant Outer</b> (50mm)	<b>Suffix /C</b>
<b>Wide Outer</b> (125mm)	<b>Suffix /WO</b>

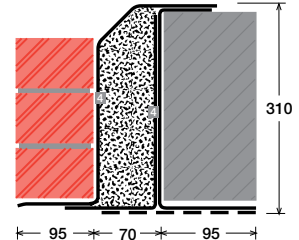
Permissible Load Ratio 1:1 - 1:19

Lintel Load Capacity Table

Opening Span	Lintel Length	Safe Load kN
600	900	185
900	1200	185
1200	1500	185
1500	1800	185
1800	2100	185
2100	2400	185
2400	2700	185
2700	3000	185
3000	3300	185
3300	3600	169
3600	3900	156
3900	4200	144
4200	4500	128
4500	4800	112
4800	5100	99
5100	5400	88
5400	5700	78
5700	6000	70
6000	6300	64
6300	6600	58
6600	6900	53
6900	7200	48
7200	7500	44
7500	7800	41
7800	8100	38
8100	8400	35

For material spec. see page 72

SUPER HEAVY DUTY/ LONG SPANS  
**HD4 170**



**Lintel Section Properties**

lxx	6589.69 cm <sup>4</sup>
Zxx	382.96- cm <sup>3</sup>
Weight	42.09 kg/m
Area	53.58 cm <sup>2</sup>
Ryy	4.44 cm

**Typical Optional Features**

<i>Option</i>	<i>Spec. Suffix</i>
<b>Lintray</b> (see p6)	<b>Prefix /L</b>
<b>Feature Brick</b> (see p9)	<b>Suffix /FB</b>
<b>Outer step</b> of 20mm	<b>Suffix /ST</b>
<b>Flat Base</b> (no plaster key)	<b>Suffix /F</b>
<b>Cant Outer</b> (50mm)	<b>Suffix /C</b>
<b>Wide Outer</b> (125mm)	<b>Suffix /WO</b>

Permissible Load Ratio 1:1 - 1:19

Lintel Load Capacity Table

Opening Span	Lintel Length	Safe Load kN
600	900	175
900	1200	175
1200	1500	175
1500	1800	175
1800	2100	175
2100	2400	175
2400	2700	175
2700	3000	175
3000	3300	175
3300	3600	159
3600	3900	147
3900	4200	136
4200	4500	126
4500	4800	118
4800	5100	111
5100	5400 *	105
5400	5700 *	95
5700	6000 *	86
6000	6300 *	78
6300	6600 *	70
6600	6900 *	64
6900	7200 *	59
7200	7500 *	54
7500	7800 *	50
7800	8100 *	46
8100	8400 *	43

\*Stainless Steel only