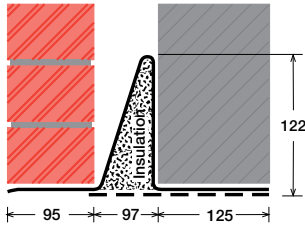


To suit walls with: Outer: 95mm - 115mm, Cavity: 95mm - 115mm, Inner: 125mm -

Cavity Wall Lintels - 100/100/125

LIGHT/STANDARD DUTY SC100Ea



Lintel Section Properties

lxx	290.29 cm ⁴
Zxx	32.19 cm ³
Weight	13.45 kg/m
Area	17.12 cm ²
Ryy	7.23 cm

Typical Optional Features	
Option	Spec. Suffix
Lintray (see p6)	Prefix /L
Feature Brick (see p9)	Suffix /FB
Outer step 20mm	Suffix /ST
Flat Base (no plaster key)	Suffix /F
Cant Outer (50mm)	Suffix /C
Wide Outer (125mm)	Suffix /WO

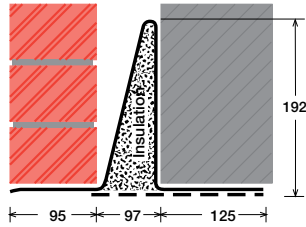
Permissible Load Ratio 1:1 - 1:5

Lintel Load Capacity Table

Opening Span	Lintel Length	Safe Load kN
600	900	30
750	1050	30
900	1200	30
1050	1350	30
1200	1500	28
1350	1650	26
1500	1800	23
1650	1950	21
1800	2100	20
1950	2250	18
2100	2400	17
2250	2550	16
2400	2700	15
2550	2850	14

Where no load is shown a heavier duty lintel is needed

STANDARD DUTY SC100Eb



Lintel Section Properties

lxx	911.35 cm ⁴
Zxx	68.67 cm ³
Weight	17.03 kg/m
Area	21.68 cm ²
Ryy	6.54 cm

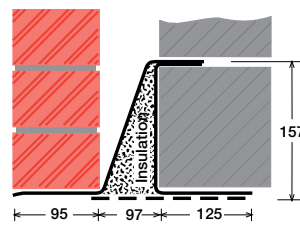
Typical Optional Features	
Option	Spec. Suffix
Lintray (see p6)	Prefix /L
Feature Brick (see p9)	Suffix /FB
Outer step of 20mm	Suffix /ST
Flat Base (no plaster key)	Suffix /F
Cant Outer (50mm)	Suffix /C
Wide Outer (125mm)	Suffix /WO

Permissible Load Ratio 1:1 - 1:5

Lintel Load Capacity Table

Opening Span	Lintel Length	Safe Load kN
600	900	50
750	1050	50
900	1200	50
1050	1350	50
1200	1500	50
1350	1650	50
1500	1800	50
1650	1950	46
1800	2100	43
1950	2250	40
2100	2400	37
2250	2550	35
2400	2700	33
2550	2850	31
2700	3000	30
2850	3150	28
3000	3300	27
3150	3450	26
3300	3600	24
3450	3750	23
3600	3900	22
3750	4050	22
3900	4200	21
4050	4350	20
4200	4500	19
4350	4650	19
4500	4800	18

MEDIUM DUTY MC100Ea



Lintel Section Properties

lxx	795.53 cm ⁴
Zxx	78.92 cm ³
Weight	16.99 kg/m
Area	21.63 cm ²
Ryy	6.60 cm

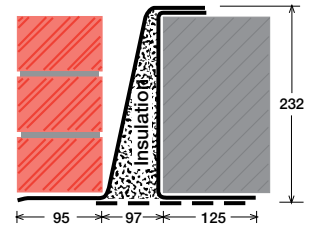
Typical Optional Features	
Option	Spec. Suffix
Lintray (see p6)	Prefix /L
Feature Brick (see p9)	Suffix /FB
Outer step of 20mm	Suffix /ST
Flat Base (no plaster key)	Suffix /F
Cant Outer (50mm)	Suffix /C
Wide Outer (125mm)	Suffix /WO

Permissible Load Ratio 1:1 - 1:19

Lintel Load Capacity Table

Opening Span	Lintel Length	Safe Load kN
600	900	40
750	1050	40
900	1200	40
1050	1350	40
1200	1500	40
1350	1650	40
1500	1800	40
1650	1950	40
1800	2100	40
1950	2250	40
2100	2400	40
2250	2550	40
2400	2700	38
2550	2850	36
2700	3000	34
2850	3150	32
3000	3300	31
3150	3450	29
3300	3600	28
3450	3750	26
3600	3900	24
3750	4050	22
3900	4200	20
4050	4350	19
4200	4500	18
4350	4650	17
4500	4800	15

MEDIUM/HEAVY DUTY MC100Eb



Lintel Section Properties

lxx	2071.39 cm ⁴
Zxx	147.48 cm ³
Weight	21.29 kg/m
Area	27.09 cm ²
Ryy	6.09 cm

Typical Optional Features	
Option	Spec. Suffix
Lintray (see p6)	Prefix /L
Feature Brick (see p9)	Suffix /FB
Outer step of 20mm	Suffix /ST
Flat Base (no plaster key)	Suffix /F
Cant Outer (50mm)	Suffix /C
Wide Outer (125mm)	Suffix /WO

Permissible Load Ratio 1:1 - 1:19

Lintel Load Capacity Table

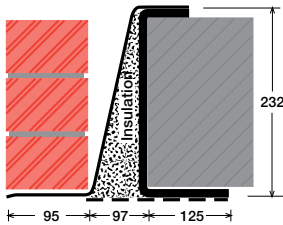
Opening Span	Lintel Length	Safe Load kN
600	900	60
750	1050	60
900	1200	60
1050	1350	60
1200	1500	60
1350	1650	60
1500	1800	60
1650	1950	60
1800	2100	60
1950	2250	60
2100	2400	60
2250	2550	60
2400	2700	60
2550	2850	57
2700	3000	54
2850	3150	51
3000	3300	49
3150	3450	47
3300	3600	45
3450	3750	43
3600	3900	41
3750	4050	40
3900	4200	38
4050	4350	37
4200	4500	36
4350	4650	34
4500	4800	33

150mm (Cavity+inner must be < 240mm). Specials also available

EXAMPLES:

Within this basic wall construction there is considerable scope to tailor the section shape to your exact requirement using our many options and usually the lead time remains the same! These examples show possible option specifications:

**HEAVY DUTY
HC100E**



Lintel Section Properties

Ixx	3211.05 cm ⁴
Zxx	238.99 cm ³
Weight	31.87 kg/m
Area	40.56 cm ²
Ryy	5.85 cm

Typical Optional Features

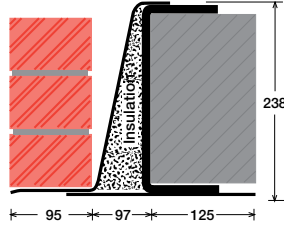
Option	Spec. Suffix
Lintray (see p6)	Prefix /L
Feature Brick (see p9)	Suffix /FB
Outer step of 20mm	Suffix /ST
Flat Base (no plaster key)	Suffix /F
Cant Outer (50mm)	Suffix /C
Wide Outer (125mm)	Suffix /WO

Permissible Load Ratio 1:1 - 1:19

Lintel Load Capacity Table

Opening Span	Lintel Length	Safe Load kN
600	900	80
750	1050	80
900	1200	80
1050	1350	80
1200	1500	80
1350	1650	80
1500	1800	80
1650	1950	80
1800	2100	80
1950	2250	80
2100	2400	80
2250	2550	80
2400	2700	80
2550	2850	80
2700	3000	80
2850	3150	80
3000	3300	80
3150	3450	80
3300	3600	80
3450	3750	78
3600	3900	75
3750	4050	72
3900	4200	69
4050	4350	67
4200	4500	65
4350	4650	63
4500	4800	60

**HEAVY DUTY/LONG SPANS
EAL6 100E**



Lintel Section Properties

Ixx	5759.35 cm ⁴
Zxx	409.93 cm ³
Weight	52.20 kg/m
Area	66.45 cm ²
Ryy	5.90 cm

Typical Optional Features

Option	Spec. Suffix
Lintray (see p6)	Prefix /L
Feature Brick (see p9)	Suffix /FB
Outer step of 20mm	Suffix /ST
Flat Base (no plaster key)	Suffix /F
Cant Outer (50mm)	Suffix /C
Wide Outer (125mm)	Suffix /WO

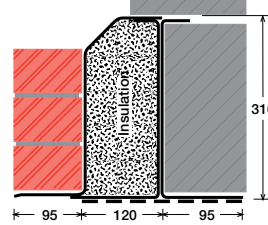
Permissible Load Ratio 1:1 - 1:19

Lintel Load Capacity Table

Opening Span	Lintel Length	Safe Load kN
600	900	187
900	1200	187
1200	1500	187
1500	1800	187
1800	2100	187
2100	2400	187
2400	2700	187
2700	3000	187
3000	3300	187
3300	3600	171
3600	3900	157
3900	4200	145
4200	4500	135
4500	4800	119
4800	5100	105
5100	5400	93
5400	5700	83
5700	6000	75
6000	6300	68
6300	6600	62
6600	6900	56
6900	7200	51
7200	7500	47
7500	7800	44
7800	8100	40
8100	8400	37

For material spec. see page 72

**SUPER HEAVY DUTY/ LONG SPANS
HD4 220**



Lintel Section Properties

Ixx	7640.74 cm ⁴
Zxx	449.27 cm ³
Weight	45.52 kg/m
Area	57.95 cm ²
Ryy	6.27 cm

Typical Optional Features

Option	Spec. Suffix
Lintray (see p6)	Prefix /L
Feature Brick (see p9)	Suffix /FB
Outer step of 20mm	Suffix /ST
Flat Base (no plaster key)	Suffix /F
Cant Outer (50mm)	Suffix /C
Wide Outer (125mm)	Suffix /WO

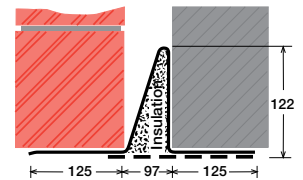
Permissible Load Ratio 1:1 - 1:19

Lintel Load Capacity Table

Opening Span	Lintel Length	Safe Load kN
600	900	196
900	1200	196
1200	1500	196
1500	1800	196
1800	2100	196
2100	2400	196
2400	2700	196
2700	3000	196
3000	3300	196
3300	3600	187
3600	3900	172
3900	4200	159
4200	4500	148
4500	4800	139
4800	5100	130
5100	5400	123
5400	5700	111
5700	6000	100
6000	6300	90
6300	6600	82
6600	6900	75
6900	7200	68
7200	7500	63
7500	7800	58
7800	8100	54
8100	8400	50

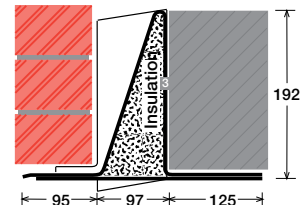
*Stainless Steel only

SC100Ea/WO



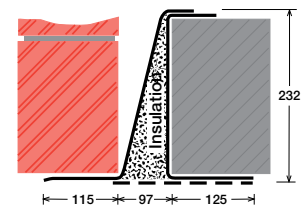
Lintel shown with optional wide outer (WO)

L/SC100Eb/F



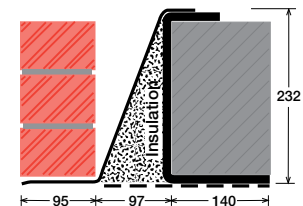
Lintel shown with optional lintray (L) and flat base (F)

MC100Eb/WO 115



Lintel shown with optional 115mm wide outer (WO 115)

HC100/WI 140



Lintel shown with optional 140mm wide inner (WI 140)