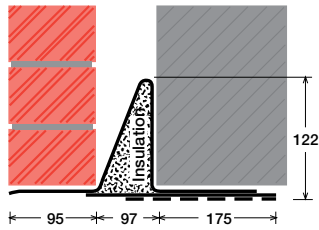


To suit walls with: Outer: 95mm - 115mm, Cavity: 97mm - 119mm, Inner: 175mm -

Cavity Wall Lintels - 100/100/175

LIGHT/STANDARD DUTY SC100EEa



Lintel Section Properties

lxx	361.76 cm ⁴
Zxx	36.54 cm ³
Weight	20.52 kg/m
Area	26.12 cm ²
Ryy	8.14 cm

Typical Optional Features	
Option	Spec. Suffix
Lintray (see p6)	Prefix /L
Feature Brick (see p9)	Suffix /FB
Outer step 20mm	Suffix /ST
Flat Base (no plaster key)	Suffix /F
Cant Outer (50mm)	Suffix /C
Wide Outer (125mm)	Suffix /WO

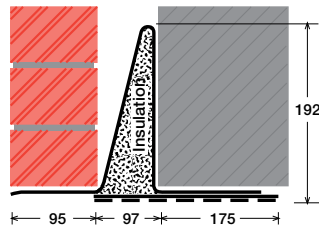
Permissible Load Ratio 1:1 - 1:5

Lintel Load Capacity Table

Opening Span	Lintel Length	Safe Load kN
600	900	30
750	1050	30
900	1200	30
1050	1350	30
1200	1500	30
1350	1650	30
1500	1800	27
1650	1950	24
1800	2100	23
1950	2250	21
2100	2400	20
2250	2550	18
2400	2700	17
2550	2850	16

Where no load is shown a heavier duty lintel is needed

STANDARD DUTY SC100EEb



Lintel Section Properties

lxx	1158.55 cm ⁴
Zxx	78.37 cm ³
Weight	24.10 kg/m
Area	30.68 cm ²
Ryy	7.62 cm

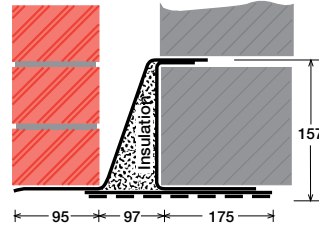
Typical Optional Features	
Option	Spec. Suffix
Lintray (see p6)	Prefix /L
Feature Brick (see p9)	Suffix /FB
Outer step of 20mm	Suffix /ST
Flat Base (no plaster key)	Suffix /F
Cant Outer (50mm)	Suffix /C
Wide Outer (125mm)	Suffix /WO

Permissible Load Ratio 1:1 - 1:5

Lintel Load Capacity Table

Opening Span	Lintel Length	Safe Load kN
600	900	40
750	1050	40
900	1200	40
1050	1350	40
1200	1500	40
1350	1650	40
1500	1800	40
1650	1950	40
1800	2100	40
1950	2250	40
2100	2400	40
2250	2550	40
2400	2700	38
2550	2850	36
2700	3000	34
2850	3150	32
3000	3300	31
3150	3450	29
3300	3600	28
3450	3750	27
3600	3900	26
3750	4050	25
3900	4200	24
4050	4350	23
4200	4500	22
4350	4650	21
4500	4800	20

MEDIUM DUTY MC100EEa



Lintel Section Properties

lxx	1082.49 cm ⁴
Zxx	96.65 cm ³
Weight	23.97 kg/m
Area	30.51 cm ²
Ryy	7.40 cm

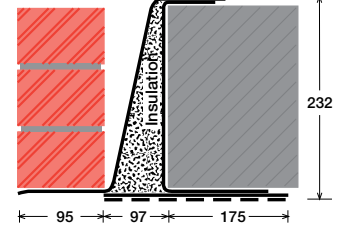
Typical Optional Features	
Option	Spec. Suffix
Lintray (see p6)	Prefix /L
Feature Brick (see p9)	Suffix /FB
Outer step of 20mm	Suffix /ST
Flat Base (no plaster key)	Suffix /F
Cant Outer (50mm)	Suffix /C
Wide Outer (125mm)	Suffix /WO

Permissible Load Ratio 1:1 - 1:19

Lintel Load Capacity Table

Opening Span	Lintel Length	Safe Load kN
600	900	40
750	1050	40
900	1200	40
1050	1350	40
1200	1500	40
1350	1650	40
1500	1800	40
1650	1950	40
1800	2100	40
1950	2250	40
2100	2400	40
2250	2550	40
2400	2700	40
2550	2850	40
2700	3000	40
2850	3150	40
3000	3300	38
3150	3450	36
3300	3600	35
3450	3750	33
3600	3900	32
3750	4050	30
3900	4200	28
4050	4350	26
4200	4500	24
4350	4650	23
4500	4800	21

MEDIUM/HEAVY DUTY MC100EEb



Lintel Section Properties

lxx	2522.60 cm ⁴
Zxx	156.05 cm ³
Weight	27.39 kg/m
Area	34.86 cm ²
Ryy	6.97 cm

Typical Optional Features	
Option	Spec. Suffix
Lintray (see p6)	Prefix /L
Feature Brick (see p9)	Suffix /FB
Outer step of 20mm	Suffix /ST
Flat Base (no plaster key)	Suffix /F
Cant Outer (50mm)	Suffix /C
Wide Outer (125mm)	Suffix /WO

Permissible Load Ratio 1:1 - 1:19

Lintel Load Capacity Table

Opening Span	Lintel Length	Safe Load kN
600	900	60
750	1050	60
900	1200	60
1050	1350	60
1200	1500	60
1350	1650	60
1500	1800	60
1650	1950	60
1800	2100	60
1950	2250	60
2100	2400	60
2250	2550	60
2400	2700	60
2550	2850	60
2700	3000	60
2850	3150	60
3000	3300	60
3150	3450	60
3300	3600	59
3450	3750	56
3600	3900	54
3750	4050	52
3900	4200	50
4050	4350	48
4200	4500	46
4350	4650	45
4500	4800	42

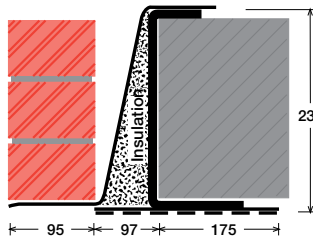
200mm (Cavity+inner must be < 300mm). Specials also available

EXAMPLES:

We can make even wider inners! Suffix/WI

Within this basic wall construction there is considerable scope to tailor the section shape to your exact requirement using our many options and usually the lead time remains the same! These examples show possible option specifications:

**HEAVY DUTY
HC100EE**



Lintel Section Properties

Ixx	3862.80 cm ⁴
Zxx	260.46 cm ³
Weight	37.71 kg/m
Area	48.00 cm ²
Ryy	6.60 cm

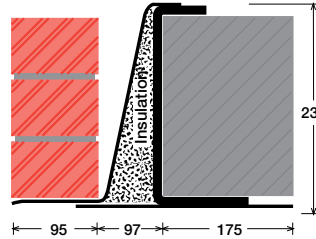
Typical Optional Features	
Option	Spec. Suffix
Lintray (see p6)	Prefix /L
Feature Brick (see p9)	Suffix /FB
Outer step of 20mm	Suffix /ST
Flat Base (no plaster key)	Suffix /F
Cant Outer (50mm)	Suffix /C
Wide Outer (125mm)	Suffix /WO

Permissible Load Ratio 1:1 - 1:19

Lintel Load Capacity Table

Opening Span	Lintel Length	Safe Load kN
600	900	80
750	1050	80
900	1200	80
1050	1350	80
1200	1500	80
1350	1650	80
1500	1800	80
1650	1950	80
1800	2100	80
1950	2250	80
2100	2400	80
2250	2550	80
2400	2700	80
2550	2850	80
2700	3000	80
2850	3150	80
3000	3300	80
3150	3450	80
3300	3600	80
3450	3750	76
3600	3900	73
3750	4050	71
3900	4200	68
4050	4350	66
4200	4500	63
4350	4650	61
4500	4800	59

**HEAVY DUTY/LONG SPANS
EAL6 100EE**



Lintel Section Properties

Ixx	5936.31 cm ⁴
Zxx	414.30 cm ³
Weight	53.77 kg/m
Area	68.45 cm ²
Ryy	6.34 cm

Typical Optional Features	
Option	Spec. Suffix
Lintray (see p6)	Prefix /L
Feature Brick (see p9)	Suffix /FB
Outer step of 20mm	Suffix /ST
Flat Base (no plaster key)	Suffix /F
Cant Outer (50mm)	Suffix /C
Wide Outer (125mm)	Suffix /WO

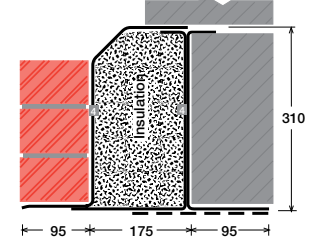
Permissible Load Ratio 1:1 - 1:19

Lintel Load Capacity Table

Opening Span	Lintel Length	Safe Load kN
600	900	189
900	1200	189
1200	1500	189
1500	1800	189
1800	2100	189
2100	2400	189
2400	2700	189
2700	3000	189
3000	3300	189
3300	3600	172
3600	3900	159
3900	4200	147
4200	4500	137
4500	4800	123
4800	5100	108
5100	5400	96
5400	5700	86
5700	6000	77
6000	6300	70
6300	6600	63
6600	6900	58
6900	7200	53
7200	7500	49
7500	7800	45
7800	8100	42
8100	8400	39

For material spec. see page 72

**SUPER HEAVY DUTY/ LONG SPANS
HD4 275**



Lintel Section Properties

Ixx	8708.75 cm ⁴
Zxx	505.65 cm ³
Weight	49.34 kg/m
Area	62.81 cm ²
Ryy	8.39 cm

Typical Optional Features	
Option	Spec. Suffix
Lintray (see p6)	Prefix /L
Feature Brick (see p9)	Suffix /FB
Outer step of 20mm	Suffix /ST
Flat Base (no plaster key)	Suffix /F
Cant Outer (50mm)	Suffix /C
Wide Outer (125mm)	Suffix /WO

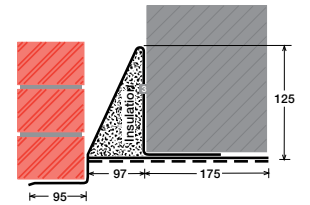
Permissible Load Ratio 1:1 - 1:19

Lintel Load Capacity Table

Opening Span	Lintel Length	Safe Load kN
600	900	231
900	1200	231
1200	1500	231
1500	1800	231
1800	2100	231
2100	2400	231
2400	2700	231
2700	3000	231
3000	3300	231
3300	3600	211
3600	3900	194
3900	4200	179
4200	4500	167
4500	4800	156
4800	5100	147
5100	5400	138
5400	5700	126
5700	6000	114
6000	6300	103
6300	6600	93
6600	6900	85
6900	7200	78
7200	7500	72
7500	7800	66
7800	8100	61
8100	8400	57

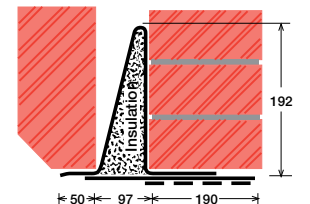
*Stainless Steel only

SC100EEa/ST



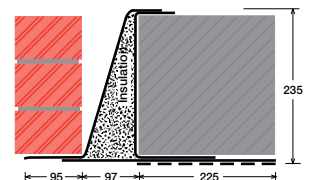
Lintel shown with optional step (ST)

SC100EEb/C/WI 190



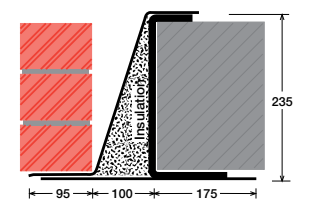
Lintel shown with optional cant outer (C) and 190mm wide inner (WI 190)

MC100EEb/WI 225



Lintel shown with optional 225mm wide inner (WI 225)

HC100EE/F



Lintel shown with optional flat base